

August 1995
Second Edition

R. Thomas Nelson, III
Registrar/Director of Institutional Research

Whitney T. Marcengill
Associate Director of Admissions

Mary Jo H. Cook
Budget Director

ACKNOWLEDGMENTS

Grateful appreciation is expressed to the following individuals for their assistance in the preparation of this publication.

Frederick C. Bosarge
Chandler R. Darling
Cynthia J. Dysart
Ronald K. Evans
Ann T. Hare
Ian M. Hubbard
Donna H. Johnson

TABLE OF CONTENTS

	Page
ADMINISTRATIVE	
Board of Trustees	1
Executive Officers	2
Organizational Chart	3
ADMISSIONS	
Freshmen	
Application History	4
Application History by Gender	5
Application History by Ethnic Origin	6
SAT Scores: Lander, State, National Averages	7
Transfers	
Application History	8
Application History by Gender	9
Application History by Ethnic Origin	10
Enrollment History by South Carolina Institutions	11
ENROLLMENT	
Fall 1994 Headcount	13
Spring 1995 Headcount	14
Fall and Spring Headcount and FTE History	15
Fall 1994 Credit Hour Production and FTE by Division	16
Spring 1995 Credit Hour Production and FTE by Division	17
Summer 1995 Credit Hour Production and FTE by Division	18
Fall and Spring Headcount History by Class	19
Summer Headcount and Credit Hour Production History	20
Headcount by Major	21
Headcount by Minor	22
Average Student Age History	23
Black Student Enrollment History	24
Geographical Distribution History by State	25
Geographical Distribution History by South Carolina County	26
Geographical Distribution History by Country of Origin	27
In-State/Out-of-State Headcount History	28
Degrees Conferred by Division	29
Freshman Retention/Attrition	30
Transfer Retention/Attrition	31
STUDENT LIFE AND SERVICES	
Fall and Spring Student Housing Utilization History	32
Library Information History	33
Career Placement History: Bachelor's	34
Career Placement History: Master's	35
ALUMNI	
Geographical Distribution History by South Carolina County	36
FACULTY AND EMPLOYEES	
FTE Student Faculty Ratio History	37
Fall 1994 Teaching Faculty by Discipline and Rank	38
Fall 1994 Faculty by Division/School by Tenure Status and Terminal Degree	39
Fall 1994 Faculty Headcount by Rank and Gender	40
Average Nine-month Faculty Salaries by Rank	41
FTE Employees	42
FINANCIAL DATA	
Full-Time Academic Fees	43
Financial Aid Award History	44
Current Fund Revenues and Expenditures	45
FACILITIES	
Inventory of Major Buildings	46

LANDER UNIVERSITY BOARD OF TRUSTEES 1994-95

ELECTED MEMBERS	CONGRESSIONAL DISTRICT	TERM EXPIRES
Nancy J. Cash	First	1996
Morgan B. Coker	Sixth	1998
C. Tyrone Gilmore	Fourth	1996
Maurice Holloway, Institutional Advancement Committee Chair	Second	1998
Darlene N. Hyman	First	1998
Glenn J. Lawhon, Jr., Chairman of the Board	Fifth	1998
Jean T. McFerrin, Secretary of the Board	Third	1996
W. Douglas Smith	Sixth	1996
George R. Starnes	Second	1996
William G. Stevens, Vice-Chairman of the Board Finance and Facilities Committee Chair	Third	1998
S. Anne Walker, Student Affairs/Intercollegiate Athletics Committee Chair	Fifth	1996
Martha S. Whitener	Fourth	1998
AT-LARGE MEMBERS		
Bobby M. Bowers, Academic Affairs Committee Chair	Appointed by the General Assembly	1998
Estelle M. Mauldin	Appointed by the General Assembly	1998
Mary D. Moore	Appointed by the General Assembly	1996
(Vacant)	Appointed by the Governor	
EX-OFFICIO MEMBER		
The Honorable David M. Beasley, Governor of South Carolina Ann B. Bowen, Governor's Designee		

EXECUTIVE OFFICERS

William C. Moran
President

Friederike Wiedemann
Vice President for Academic Affairs

William E. Troublefield, Jr.
Vice President for Business and Administration

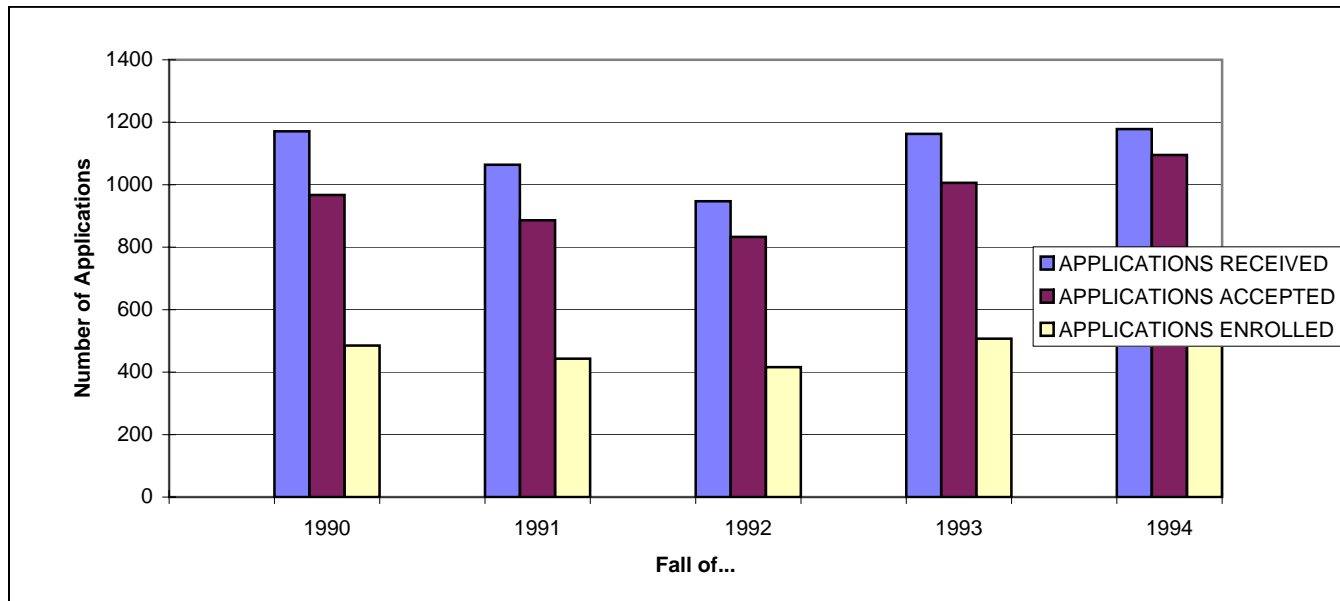
H. Randall Bouknight
Vice President for Student Affairs

Jefferson J. May
Vice President for University Advancement

Finis E. Horne
Athletic Director

FRESHMEN APPLICATION HISTORY

FOR FALL	APPLICATIONS RECEIVED	APPLICATIONS ACCEPTED	% ACCEPTED OF TOTAL RECEIVED	APPLICATIONS ENROLLED	% ENROLLED OF TOTAL RECEIVED
1990	1171	967	82.58%	485	41.42%
1991	1064	886	83.27%	443	41.64%
1992	947	833	87.96%	416	43.93%
1993	1163	1006	86.50%	507	43.59%
1994	1178	1095	92.95%	494	41.94%



FRESHMEN APPLICATION HISTORY BY GENDER

APPLICATIONS RECEIVED FOR FALL	MALE		FEMALE		TOTAL
	NUMBER	% OF TOTAL	NUMBER	% OF TOTAL	
1990	431	36.81%	740	63.19%	1171
1991	325	30.55%	739	69.45%	1064
1992	304	32.10%	643	67.90%	947
1993	387	33.28%	776	66.72%	1163
1994	381	32.34%	797	67.66%	1178
APPLICATIONS ACCEPTED FOR FALL	MALE		FEMALE		TOTAL
	NUMBER	% OF TOTAL	NUMBER	% OF TOTAL	
1990	344	35.57%	623	64.43%	967
1991	267	30.14%	619	69.86%	886
1992	258	30.97%	575	69.03%	833
1993	316	31.41%	690	68.59%	1006
1994	342	31.23%	753	68.77%	1095
APPLICATIONS ENROLLED FOR FALL	MALE		FEMALE		TOTAL
	NUMBER	% OF TOTAL	NUMBER	% OF TOTAL	
1990	168	34.64%	317	65.36%	485
1991	145	32.73%	298	67.27%	443
1992	132	31.73%	284	68.27%	416
1993	169	33.33%	338	66.67%	507
1994	162	32.79%	332	67.21%	494

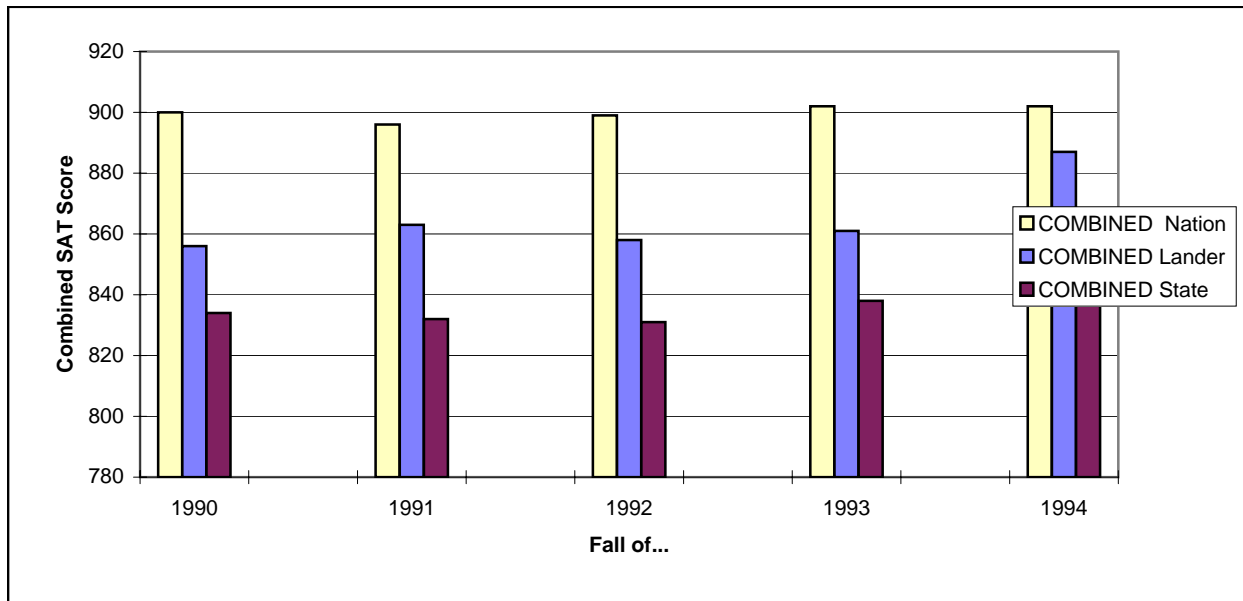
FRESHMEN APPLICATION HISTORY BY ETHNIC ORIGIN

FOR FALL	Black/Non-Hispanic		White/Non-Hispanic		Hispanic		Asian/Pacific Islander		American Indian/Alaskan Native		Non-Resident Alien	
	Number	% of Total	Number	% of Total	Number	% of Total	Number	% of Total	Number	% of Total	Number	% of Total
APPLICATIONS RECEIVED												
1990	209	17.85%	948	80.96%	7	0.60%	6	0.51%	1	0.09%	0	0.00%
1991	219	20.58%	820	77.07%	10	0.94%	9	0.85%	1	0.09%	5	0.47%
1992	186	19.64%	735	77.61%	6	0.63%	4	0.42%	1	0.11%	15	1.58%
1993	233	20.03%	892	76.70%	9	0.77%	13	1.12%	0	0.00%	16	1.38%
1994	193	16.38%	947	80.39%	8	0.68%	8	0.68%	2	0.17%	20	1.70%
APPLICATION ACCEPTED												
1990	145	14.99%	809	83.66%	7	0.72%	5	0.52%	1	0.10%	0	0.00%
1991	146	16.48%	718	81.04%	9	1.02%	7	0.79%	1	0.11%	5	0.56%
1992	148	17.77%	665	79.83%	6	0.72%	4	0.48%	1	0.12%	9	1.08%
1993	169	16.80%	808	80.32%	7	0.70%	12	1.19%	0	0.00%	10	0.99%
1994	170	15.53%	906	82.74%	5	0.46%	7	0.64%	1	0.09%	6	0.55%
APPLICATIONS ENROLLED												
1990	69	14.23%	408	84.12%	4	0.82%	4	0.82%	0	0.00%	0	0.00%
1991	70	15.80%	360	81.26%	6	1.35%	2	0.45%	1	0.23%	4	0.90%
1992	65	15.63%	343	82.45%	2	0.48%	0	0.00%	0	0.00%	6	1.44%
1993	84	16.57%	413	81.46%	2	0.39%	0	0.00%	0	0.00%	8	1.58%
1994	83	16.80%	403	81.58%	1	0.20%	2	0.40%	0	0.00%	5	1.01%

TOTAL
1171
1064
947
1163
1178
967
886
833
1006
1095
485
443
416
507
494

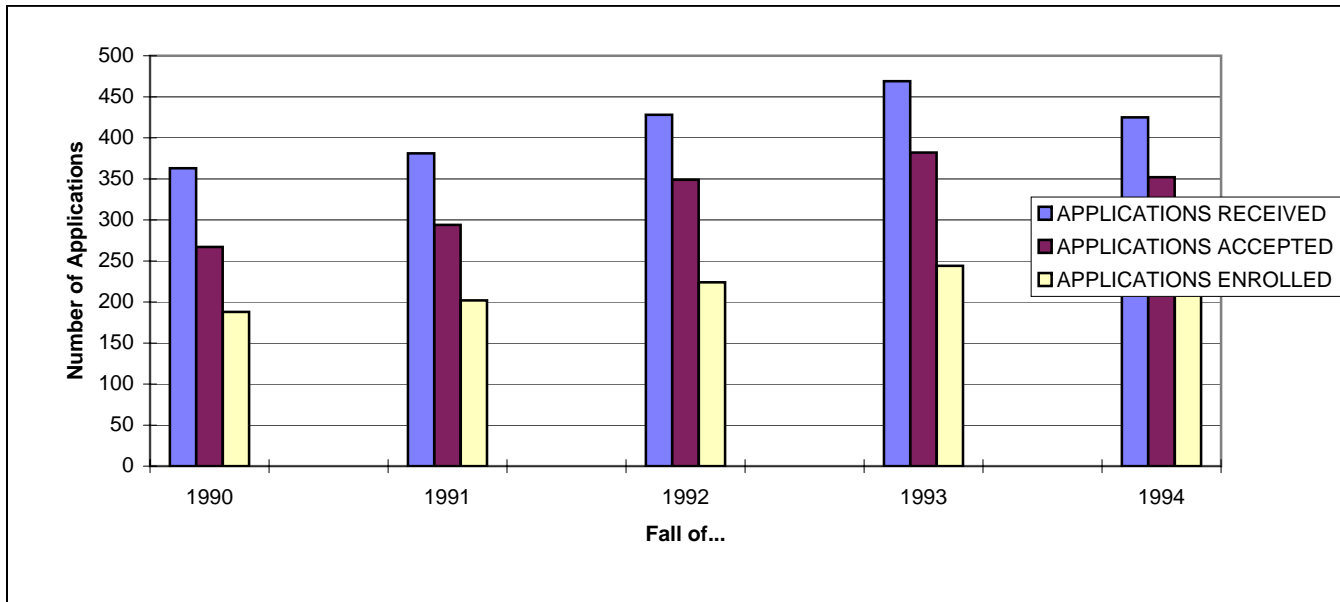
FRESHMEN AVERAGE SAT COMPARISONS

YEAR	NUMBER OF NEW FRESHMEN	VERBAL			MATH			COMBINED		
		Lander	State	Nation	Lander	State	Nation	Lander	State	Nation
1990	485	409	397	424	447	437	476	856	834	900
1991	443	410	395	422	453	437	474	863	832	896
1992	416	408	384	423	450	437	476	858	831	899
1993	507	406	396	424	455	442	478	861	838	902
1994	494	420	395	423	467	443	479	887	838	902



TRANSFER APPLICATION HISTORY

FOR FALL	APPLICATIONS RECEIVED	APPLICATIONS ACCEPTED	% ACCEPTED OF TOTAL RECEIVED	APPLICATIONS ENROLLED	% ENROLLED OF TOTAL RECEIVED
1990	363	267	73.55%	188	51.79%
1991	381	294	77.17%	202	53.02%
1992	428	349	81.54%	224	52.34%
1993	469	382	81.45%	244	52.03%
1994	425	352	82.82%	221	52.00%



TRANSFER APPLICATION HISTORY BY GENDER

APPLICATIONS RECEIVED FOR FALL	MALE		FEMALE		TOTAL
	NUMBER	% OF TOTAL	NUMBER	% OF TOTAL	
1990	151	41.60%	212	58.40%	363
1991	153	40.16%	228	59.84%	381
1992	188	43.93%	240	56.07%	428
1993	153	32.62%	316	67.38%	469
1994	168	39.53%	257	60.47%	425
APPLICATIONS ACCEPTED FOR FALL	MALE		FEMALE		TOTAL
	NUMBER	% OF TOTAL	NUMBER	% OF TOTAL	
1990	106	39.70%	161	60.30%	267
1991	107	36.39%	187	63.61%	294
1992	155	44.41%	194	55.59%	349
1993	123	32.20%	259	67.80%	382
1994	137	38.92%	215	61.08%	352
APPLICATIONS ENROLLED FOR FALL	MALE		FEMALE		TOTAL
	NUMBER	% OF TOTAL	NUMBER	% OF TOTAL	
1990	83	44.15%	105	55.85%	188
1991	76	37.62%	126	62.38%	202
1992	104	46.43%	120	53.57%	224
1993	89	36.48%	155	63.52%	244
1994	86	38.91%	135	61.09%	221

TRANSFER APPLICATION HISTORY BY ETHNIC ORIGIN

FOR FALL	Black/Non-Hispanic		White/Non-Hispanic		Hispanic		Asian/Pacific Islander		American Indian/Alaskan Native		Non-Resident Alien		TOTAL
	Number	% of Total	Number	% of Total	Number	% of Total	Number	% of Total	Number	% of Total	Number	% of Total	
APPLICATIONS RECEIVED													
1990	57	15.70%	301	82.92%	2	0.55%	2	0.55%	1	0.28%	0	0.00%	363
1991	66	17.32%	313	82.15%	2	0.52%	0	0.00%	0	0.00%	0	0.00%	381
1992	110	25.70%	300	70.09%	3	0.70%	5	1.17%	0	0.00%	10	2.34%	428
1993	120	25.59%	335	71.43%	1	0.21%	6	1.28%	0	0.00%	7	1.49%	469
1994	99	23.29%	301	70.82%	4	0.94%	3	0.71%	0	0.00%	18	4.24%	425
APPLICATION ACCEPTED													
1990	37	13.86%	227	85.02%	1	0.37%	1	0.37%	1	0.37%	0	0.00%	267
1991	43	14.63%	249	84.69%	2	0.68%	0	0.00%	0	0.00%	0	0.00%	294
1992	81	23.21%	257	73.64%	3	0.86%	4	1.15%	0	0.00%	4	1.15%	349
1993	90	23.56%	282	73.82%	1	0.26%	6	1.57%	0	0.00%	3	0.79%	382
1994	78	22.16%	258	73.30%	3	0.85%	2	0.57%	0	0.00%	11	3.13%	352
APPLICATIONS ENROLLED													
1990	29	15.43%	157	83.51%	1	0.53%	0	0.00%	1	0.53%	0	0.00%	188
1991	22	10.89%	178	88.12%	2	0.99%	0	0.00%	0	0.00%	0	0.00%	202
1992	53	23.66%	163	72.77%	2	0.89%	2	0.89%	0	0.00%	4	1.79%	224
1993	55	22.54%	183	75.00%	0	0.00%	3	1.23%	0	0.00%	3	1.23%	244
1994	47	21.27%	162	73.30%	2	0.90%	1	0.45%	0	0.00%	9	4.07%	221

**ENROLLMENT COMPARISON OF TRANSFERS
TO LANDER UNIVERSITY FROM SOUTH CAROLINA INSTITUTIONS**

PUBLIC JUNIOR/TECHNICAL COLLEGES	FALL 1990	FALL 1991	FALL 1992	FALL 1993	FALL 1994
Aiken Technical College	4	0	1	1	2
Central Carolina Technical College	0	0	0	0	0
Chesterfield-Marlboro Technical College	0	0	0	0	4
Denmark Technical College	0	0	0	0	4
Florence-Darlington Technical College	1	1	1	0	1
Greenville Technical College	14	17	13	32	21
Horry-Georgetown Technical College	0	1	1	0	2
Midlands Technical College	1	7	7	11	6
Orangeburg-Calhoun Technical College	1	0	0	3	1
Piedmont Technical College	51	36	47	42	49
Spartanburg Technical College	0	0	0	1	0
Technical College of Low Country	0	0	0	0	0
Tri-County Technical College	5	15	6	16	10
Trident Technical College	0	1	3	0	3
USC-Beaufort	0	0	3	1	0
USC-Lancaster	0	1	0	1	1
USC-Salkehatchie	1	0	1	2	1
USC-Sumter	2	0	0	1	0
USC-Union	0	0	1	2	5
Williamsburg Technical College	0	1	0	0	0
York Technical College	3	2	0	1	0

PUBLIC SENIOR COLLEGES AND UNIVERSITIES	FALL 1990	FALL 1991	FALL 1992	FALL 1993	FALL 1994
The Citadel	1	1	1	1	0
Clemson University	9	7	5	4	4
Coastal Carolina University	1	0	1	1	1
College of Charleston	2	0	2	2	5
Francis Marion University	2	2	2	4	1
Medical University of S.C.	0	0	1	0	1
S.C. State University	2	0	2	6	3
USC-Aiken	0	1	3	2	0
USC-Columbia	9	13	8	7	16
USC-Spartanburg	2	2	4	6	3
Winthrop University	1	5	1	5	4

(continued)

PRIVATE JUNIOR COLLEGES	FALL 1990	FALL 1991	FALL 1992	FALL 1993	FALL 1994
Columbia Junior College	1	0	1	0	0
North Greenville College	1	6	2	7	6
Spartanburg Methodist College	12	10	20	15	4

PRIVATE SENIOR COLLEGES AND UNIVERSITIES	FALL 1990	FALL 1991	FALL 1992	FALL 1993	FALL 1994
Allen University	0	0	0	1	0
Anderson College	15	14	14	7	3
Benedict College	1	0	1	1	0
Bob Jones University	0	0	0	0	0
Central Wesleyan College	0	1	2	0	0
Charleston Southern University	3	4	2	1	2
Clafin College	0	0	1	0	0
Coker College	0	1	1	0	0
Columbia Bible College	0	0	0	0	0
Columbia College	1	0	0	0	1
Converse College	0	2	0	2	1
Erskine College	1	1	2	3	2
Furman University	1	1	1	0	1
Limestone College	2	1	0	1	1
Morris College	0	0	1	1	2
Newberry College	5	2	4	3	2
Presbyterian College	0	2	3	0	0
Voorhees College	0	0	0	1	0
Wofford College	0	1	2	1	0

SUMMARY	FALL 1990	FALL 1991	FALL 1992	FALL 1993	FALL 1994
Public Junior/Technical Colleges	83	82	84	114	110
Public Senior Colleges/Universities	29	31	30	38	38
Private Junior Colleges	14	16	23	22	10
Private Senior Colleges/Universities	29	30	34	22	15

FALL 1994 HEADCOUNT ENROLLMENT

INTENSITY AND CLASSIFICATION OF STUDENT	Non-Resident Alien		Black/ Non-Hispanic		Amer. Indian/ Alaskan Native		Asian/ Pacific Islander		Hispanic		White Non-Hispanic		GRAND TOTAL			
	Male	Female	Male	Female	Male	Female	Male	Female	Male	Female	Male	Female	Male	Female	TOTAL	% of GRAND TOTAL
FULL-TIME STUDENTS																
First Year	4	6	34	126	0	0	0	2	0	1	223	378	261	513	774	28%
Second Year	11	1	14	59	0	0	0	0	0	3	124	232	149	295	444	16%
Third Year	4	3	22	50	0	0	0	2	2	1	125	182	153	238	391	14%
Fourth Year/Beyond	7	1	19	48	0	0	0	1	2	0	121	229	149	279	428	15%
Non-Degree UG	0	0	0	1	0	0	0	0	0	0	4	3	4	4	8	0%
UG SUBTOTAL	26	11	89	284	0	0	0	5	4	5	597	1024	716	1329	2045	74%
GRAD SUBTOTAL	0	0	0	1	0	0	0	0	0	0	0	8	0	9	9	0%
TOTAL FULL-TIME	26	11	89	285	0	0	0	5	4	5	597	1032	716	1338	2054	74%
PART-TIME STUDENTS																
First Year	0	0	2	16	0	0	0	0	0	0	14	30	16	46	62	2%
Second Year	0	0	5	20	0	0	0	0	0	1	21	35	26	56	82	3%
Third Year	0	0	4	16	0	0	0	0	0	0	20	38	24	54	78	3%
Fourth Year/Beyond	1	0	11	24	1	0	0	0	0	0	44	67	57	91	148	5%
Non-Degree UG	0	1	2	9	0	0	0	0	0	0	20	31	22	41	63	2%
UG SUBTOTAL	1	1	24	85	1	0	0	0	0	1	119	201	145	288	433	16%
GRAD SUBTOTAL	0	0	5	27	0	0	0	0	0	1	37	222	42	250	292	11%
TOTAL PART-TIME	1	1	29	112	1	0	0	0	0	2	156	423	187	538	725	26%
GRAND TOTAL	27	12	118	397	1	0	0	5	4	7	753	1455	903	1876	2779	100%

Figures are derived by Integrated Postsecondary Education Data System (IPEDS) requirements.

SPRING 1995 HEADCOUNT ENROLLMENT

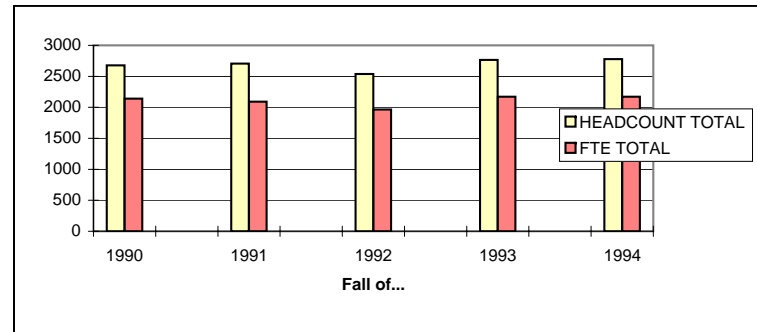
INTENSITY AND CLASSIFICATION OF STUDENT	Non-Resident Alien		Black/ Non-Hispanic		Amer. Indian/ Alaskan Native		Asian/ Pacific Islander		Hispanic		White Non-Hispanic		GRAND TOTAL			
	Male	Female	Male	Female	Male	Female	Male	Female	Male	Female	Male	Female	Male	Female	TOTAL	% of GRAND TOTAL
FULL-TIME STUDENTS																
First Year	4	4	29	91	0	0	1	4	1	1	151	260	186	360	546	21%
Second Year	9	2	16	67	0	0	0	0	1	0	129	236	155	305	460	18%
Third Year	5	2	21	53	0	0	0	0	0	3	129	191	155	249	404	16%
Fourth Year/Beyond	5	1	23	48	1	0	0	2	3	0	140	240	172	291	463	18%
Non-Degree UG	0	0	0	1	0	0	0	0	0	0	0	2	0	3	3	0%
UG SUBTOTAL	23	9	89	260	1	0	1	6	5	4	549	929	668	1208	1876	73%
GRAD SUBTOTAL	0	0	0	2	0	0	0	0	0	0	0	2	0	4	4	0%
TOTAL FULL-TIME	23	9	89	262	1	0	1	6	5	4	549	931	668	1212	1880	73%
PART-TIME STUDENTS																
First Year	0	0	2	8	0	0	0	0	0	0	13	37	15	45	60	2%
Second Year	0	0	5	19	0	0	0	0	0	1	21	26	26	46	72	3%
Third Year	0	0	3	17	0	0	0	0	0	0	10	42	13	59	72	3%
Fourth Year/Beyond	2	0	13	26	0	1	0	0	0	0	48	66	63	93	156	6%
Non-Degree UG	0	0	5	8	0	0	0	0	0	1	24	53	29	62	91	4%
UG SUBTOTAL	2	0	28	78	0	1	0	0	0	2	116	224	146	305	451	18%
GRAD SUBTOTAL	0	0	4	21	0	0	0	0	0	0	33	187	37	208	245	10%
TOTAL PART-TIME	2	0	32	99	0	1	0	0	0	2	149	411	183	513	696	27%
GRAND TOTAL	25	9	121	361	1	1	1	6	5	6	698	1342	851	1725	2576	100%

Figures are derived by Integrated Postsecondary Education Data System (IPEDS) requirements.

Source: Office of the Registrar and Institutional Research

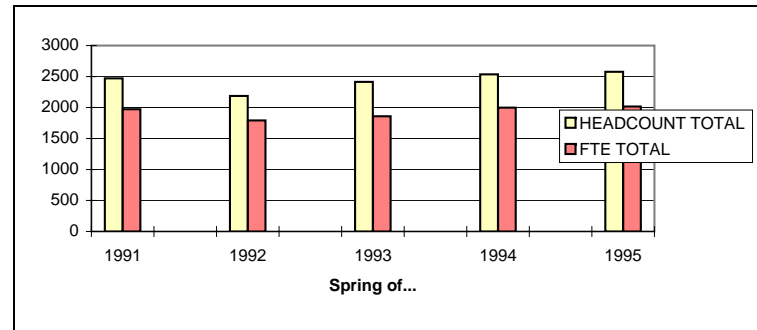
FALL HEADCOUNT AND FTE HISTORY

	HEADCOUNT			FTE		
	UG	GRAD	TOTAL	UG	GRAD	TOTAL
1990	2344	333	2677	2054	86	2140
1991	2251	455	2706	1974	116	2090
1992	2212	326	2538	1879	87	1966
1993	2419	345	2764	2070	101	2171
1994	2478	301	2779	2081	91	2172



SPRING HEADCOUNT AND FTE HISTORY

	HEADCOUNT			FTE		
	UG	GRAD	TOTAL	UG	GRAD	TOTAL
1991	2189	282	2471	1900	73	1973
1992	2064	122	2186	1755	37	1792
1993	2131	283	2414	1766	92	1858
1994	2268	266	2534	1917	82	1999
1995	2327	249	2576	1946	70	2017



**FALL 1994 CREDIT HOUR PRODUCTION*
AND FTE** ENROLLMENT**

SCHOOL/DIVISION	CHP	FTE	% OF GRAND TOTAL FTE
Mathematics/Computer Science			
Lower Division	3156	210	14%
Upper Division	318	21	3%
TOTAL	3474	232	11%
Other (ACAD,HS,IDS,MS)***			
Lower Division	406	27	2%
Upper Division	23	2	0%
TOTAL	429	29	1%
School of Business			
Lower Division	1821	121	8%
Upper Division	1716	114	19%
TOTAL	3537	236	11%
School of Education			
Lower Division	742	49	3%
Upper Division	2302	153	25%
Graduate	1089	91	100%
TOTAL	4133	294	14%
Fine Arts			
Lower Division	2241	149	10%
Upper Division	629	42	7%
TOTAL	2870	191	9%
Physical Education/Exercise Studies			
Lower Division	1784	119	8%
Upper Division	596	40	7%
TOTAL	2380	159	7%
Humanities			
Lower Division	4830	322	22%
Upper Division	412	27	5%
TOTAL	5242	349	16%
Nursing			
Lower Division	348	23	2%
Upper Division	930	62	10%
TOTAL	1278	85	4%
Biological/Physical Science			
Lower Division	2917	194	13%
Upper Division	417	28	5%
TOTAL	3334	222	10%
History/Political Science			
Lower Division	1680	112	8%
Upper Division	600	40	7%
TOTAL	2280	152	7%
Behavioral Science			
Lower Division	2187	146	10%
Upper Division	1162	77	13%
TOTAL	3349	223	10%
GRAND TOTAL			
Lower Division	22112	1474	68%
Upper Division	9105	607	28%
Graduate	1089	91	4%
TOTAL	32306	2172	100%

* Credit Hour Production (CHP) is the sum of credit hours produced by all disciplines offered in each School/Division.

** FTE is calculated by dividing the credit hour production by 15 for undergraduates and 12 for graduates. (Totals may not add due to rounding).

*** Includes disciplines: Academics, Honors Seminar, Interdisciplinary Studies, Military Science.

**SPRING 1995 CREDIT HOUR PRODUCTION*
AND FTE** ENROLLMENT**

SCHOOL/DIVISION	CHP	FTE	% OF GRAND TOTAL FTE
Mathematics/Computer Science			
Lower Division	2929	195	15%
Upper Division	304	20	3%
TOTAL	3233	216	11%
Other (ACAD,HS,IDS,MS)***			
Lower Division	152	10	1%
Upper Division	28	2	0%
TOTAL	180	12	1%
School of Business			
Lower Division	1902	127	10%
Upper Division	1947	130	20%
TOTAL	3849	257	13%
School of Education			
Lower Division	1037	69	5%
Upper Division	2105	140	22%
Graduate	843	70	100%
TOTAL	3985	280	14%
Fine Arts			
Lower Division	2446	163	13%
Upper Division	748	50	8%
TOTAL	3194	213	11%
Physical Education/Exercise Studies			
Lower Division	1755	117	9%
Upper Division	704	47	7%
TOTAL	2459	164	8%
Humanities			
Lower Division	3802	253	20%
Upper Division	447	30	5%
TOTAL	4249	283	14%
Nursing			
Lower Division	402	27	2%
Upper Division	896	60	9%
TOTAL	1298	87	4%
Biological/Physical Science			
Lower Division	2033	136	10%
Upper Division	463	31	5%
TOTAL	2496	166	8%
History/Political Science			
Lower Division	1548	103	8%
Upper Division	733	49	8%
TOTAL	2281	152	8%
Behavioral Science			
Lower Division	1483	99	8%
Upper Division	1330	89	14%
TOTAL	2813	188	9%
GRAND TOTAL			
Lower Division	19489	1299	64%
Upper Division	9705	647	32%
Graduate	843	70	3%
TOTAL	30037	2017	100%

* Credit Hour Production is the sum of credit hours produced by all disciplines offered in each School/Division.

** FTE is calculated by dividing the credit hour production by 15 for undergraduates and 12 for graduates. (Totals may not add due to rounding).

*** Includes disciplines: Academics, Honors Seminar, Interdisciplinary Studies, Military Science.

**SUMMER 1995 CREDIT HOUR PRODUCTION*
AND FTE** ENROLLMENT**

SCHOOL/DIVISION	CHP	FTE	% OF GRAND TOTAL FTE
Mathematics/Computer Science			
Lower Division	357	24	13%
Upper Division	54	4	3%
TOTAL	411	27	6%
Other (ACAD,HS,IDS,MS)***			
Lower Division	89	6	3%
Upper Division	0	0	0%
TOTAL	89	6	1%
School of Business			
Lower Division	243	16	9%
Upper Division	618	41	34%
TOTAL	861	57	13%
School of Education			
Lower Division	84	6	3%
Upper Division	451	30	25%
Graduate	1227	102	87%
TOTAL	1762	138	32%
Fine Arts			
Lower Division	369	25	13%
Upper Division	118	8	6%
Graduate	48	4	3%
TOTAL	535	36	9%
Physical Education/Exercise Studies			
Lower Division	245	16	9%
Upper Division	108	7	6%
TOTAL	353	24	6%
Humanities			
Lower Division	408	27	14%
Upper Division	0	0	0%
Graduate	15	1	1%
TOTAL	423	28	7%
Nursing			
Lower Division	136	9	5%
Upper Division	47	3	3%
TOTAL	183	12	3%
Biological/Physical Science			
Lower Division	600	40	21%
Upper Division	0	0	0%
Graduate	113	9	8%
TOTAL	713	49	12%
History/Political Science			
Lower Division	126	8	4%
Upper Division	111	7	6%
TOTAL	237	16	4%
Behavioral Science			
Lower Division	159	11	6%
Upper Division	325	22	18%
TOTAL	484	32	8%
GRAND TOTAL			
Lower Division	2816	188	44%
Upper Division	1832	122	29%
Graduate	1403	117	27%
TOTAL	6051	427	100%

* Credit Hour Production is the sum of credit hours produced by all disciplines offered in each School/Division.

** FTE is calculated by dividing the credit hour production by 15 for undergraduates and 12 for graduates. (Totals may not add due to rounding).

*** Includes disciplines: Academics, Honors Seminar, Interdisciplinary Studies, Military Science.

FALL HEADCOUNT ENROLLMENT BY CLASS

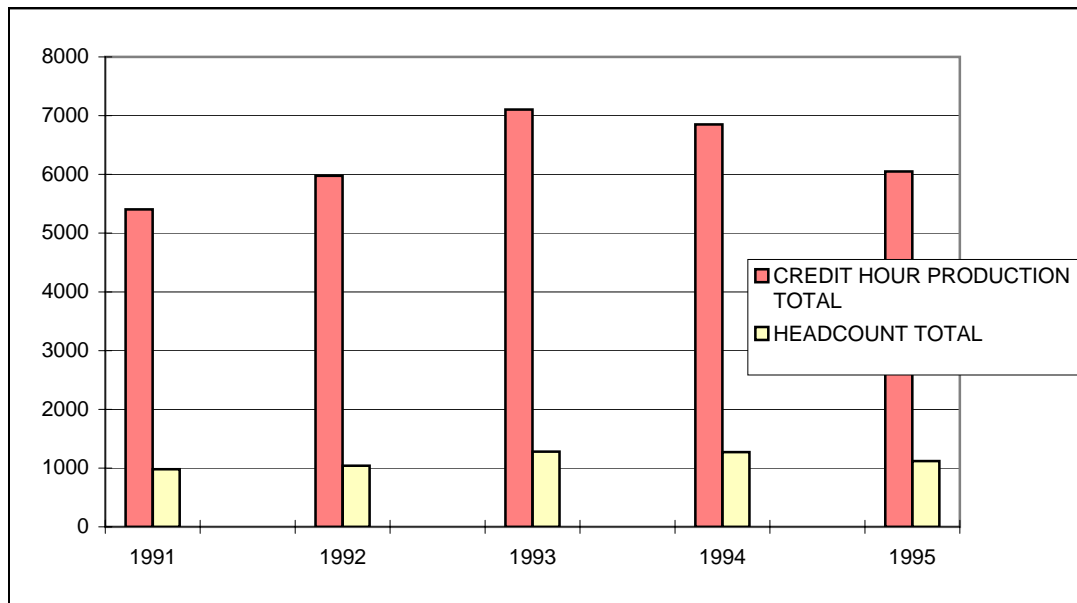
	1990		1991		1992		1993		1994	
	Headcount	% of Total	Headcount	% of Total	Headcount	% of Total	Headcount	% of Total	Headcount	% of Total
Freshman	890	33.2%	793	29.3%	773	30.5%	843	30.5%	836	30.1%
Sophomore	515	19.2%	473	17.5%	443	17.5%	494	17.9%	526	18.9%
Junior	410	15.3%	425	15.7%	414	16.3%	449	16.2%	469	16.9%
Senior	408	15.2%	428	15.8%	449	17.7%	490	17.7%	497	17.9%
Second Degree	34	1.3%	40	1.5%	48	1.9%	66	2.4%	79	2.8%
Non-Degree/Special	87	3.2%	92	3.4%	85	3.3%	77	2.8%	71	2.6%
UG TOTAL	2344	87.6%	2251	83.2%	2212	87.2%	2419	87.5%	2478	89.2%
Graduate	333	12.4%	455	16.8%	326	12.8%	345	12.5%	301	10.8%
TOTAL	2677	100.0%	2706	100.0%	2538	100.0%	2764	100.0%	2779	100.0%

SPRING HEADCOUNT ENROLLMENT BY CLASS

CLASS LEVEL	1991		1992		1993		1994		1995	
	Headcount	% of Total	Headcount	% of Total	Headcount	% of Total	Headcount	% of Total	Headcount	% of Total
Freshman	593	24.0%	559	25.6%	546	22.6%	636	25.1%	606	23.5%
Sophomore	541	21.9%	441	20.2%	462	19.1%	481	19.0%	532	20.7%
Junior	468	18.9%	449	20.5%	437	18.1%	503	19.9%	476	18.5%
Senior	442	17.9%	478	21.9%	486	20.1%	488	19.3%	548	21.3%
Second Degree	33	1.3%	38	1.7%	58	2.4%	62	2.4%	71	2.8%
Non-Degree/Special	112	4.5%	99	4.5%	142	5.9%	98	3.9%	94	3.6%
UG TOTAL	2189	88.6%	2064	94.4%	2131	88.3%	2268	89.5%	2327	90.3%
Graduate	282	11.4%	122	5.6%	283	11.7%	266	10.5%	249	9.7%
TOTAL	2471	100.0%	2186	100.0%	2414	100.0%	2534	100.0%	2576	100.0%

SUMMER HEADCOUNT AND CREDIT HOUR PRODUCTION

	HEADCOUNT			CREDIT HOUR PRODUCTION		
	UG	GRAD	TOTAL	UG	GRAD	TOTAL
1991	776	205	981	4648	756	5404
1992	811	229	1040	4947	1029	5976
1993	893	387	1280	5404	1700	7104
1994	872	399	1271	5186	1665	6851
1995	781	338	1119	4648	1403	6051



HEADCOUNT BY MAJOR

	FALL 1990	FALL 1991	FALL 1992	FALL 1993	FALL 1994
UNDERGRADUATES					
Biology	39	38	52	62	76
Business Education	16	10	2	0	0
Business: Accounting	87	80	101	108	108
Business: ECON/FINA	0	0	1	19	44
Business: Economics	15	27	23	12	5
Business: General	424	214	74	29	18
Business: MGMT/MKT	3	122	192	229	208
Chemistry	20	18	21	16	19
Chemistry (Engineering)	2	3	4	6	12
Comp Sci (Engineering)	7	6	8	5	5
Computer Science: Info Sci	20	23	33	34	35
Computer Science: Regular	63	60	32	32	30
Early Childhood Educ	123	117	100	124	108
Elementary Education	229	231	202	250	234
English	61	64	52	63	67
Exercise Studies	46	57	61	75	75
French	3	2	2	1	1
Gen Ed/Undeclared	141	140	238	307	321
Gerontology Certificate	0	0	1	2	0
Health Care Management	0	0	0	0	19
History	66	71	65	73	79
Home Economics	25	19	8	1	0
HPER	16	7	3	1	0
Interdisciplinary Studies	42	50	35	19	18
Mass Comm/Theatre	0	0	0	0	19
Math (Engineering)	35	37	32	35	29
Mathematics	33	36	34	34	34
Medical Technology	12	20	25	23	20
Music	0	4	14	18	19
Music Education	31	37	29	41	32
Nursing	100	112	146	113	114
Nursing Applicant	0	0	0	0	2
Physical Education	41	46	50	43	44
Political Science	49	56	45	41	42
Pre-Allied Health	17	14	18	18	17
Pre-Dentistry	6	3	0	0	1
Pre-IDS	0	2	2	3	7
Pre-Law	9	6	6	8	7
Pre-Medical	22	15	6	18	8
Pre-Nursing	48	58	47	93	93
Pre-Pharmacy	14	11	9	11	7
Pre-Vet	8	4	2	0	1
Psychology	129	109	107	105	110
Psychology: Counseling	0	0	0	0	10
Sociology	84	98	71	63	65
Sociology: Crim Just	0	0	24	39	69
Special Education	0	3	52	82	82
Speech and Theatre	20	21	15	15	11
Undeclared	134	102	82	78	64
Visual Arts	104	98	86	70	89
Sub-Total (UG)	2344	2251	2212	2419	2478
GRADUATES					
Elementary Education	64	67	119	130	89
Undeclared	269	388	207	215	212
Sub-Total (G)	333	455	326	345	301
GRAND TOTAL	2677	2706	2538	2764	2779

HEADCOUNT BY MINOR

	FALL 1990	FALL 1991	FALL 1992	FALL 1993	FALL 1994
Anthropology	2	1	3	6	5
Art History	11	7	9	3	7
Biology	24	15	18	20	27
Business Administration	72	68	48	65	96
Chemistry	7	11	7	5	19
Child and Family Studies	0	13	26	54	72
Coaching Education	28	28	25	32	48
Computer Science	53	45	26	33	56
Dance	24	26	13	20	30
Electronic Art	0	0	3	7	14
English	9	12	7	11	18
French	12	6	5	9	8
Gerontology Concentration*	0	0	16	14	11
History	34	33	18	40	48
International Studies	0	0	0	0	4
Latin American Studies	0	0	0	0	0
Mass Media	0	23	15	1	1
Mathematics	28	28	16	23	33
Media Production	1	2	8	9	18
Music	13	18	18	27	53
Philosophy-Religion	12	13	13	16	18
Political Science	14	13	15	23	24
Psychology	73	80	65	82	132
Sociology	27	20	20	19	37
Spanish	14	15	14	16	20
Special Education**	57	58	33	28	0
Speech and Theatre	16	14	16	17	22
Visual Arts	12	10	11	15	15
Writing	7	9	5	10	14
Sub-Total	550	568	473	605	850
No Minor Declared	2127	2138	2065	2159	1929
GRAND TOTAL	2677	2706	2538	2764	2779

* The Gerontology Concentration is not a minor, but it is reported here because like a minor, it can be earned with any major.

** Deleted in 1993-94

AVERAGE STUDENT AGE (FALL)

YEAR	UNDERGRADUATE				GRADUATE		ALL STUDENTS		
	DEGREE		NON-DEGREE		DEGREE AND NON-DEGREE				
	Male	Female	Male	Female	Male	Female	Male	Female	TOTAL
1992	22.8	22.3	26.1	32.5	36.4	35.7	23.6	24.8	24.4
1993	22.6	22.6	33.7	31.6	43.9	38	24.5	25.1	24.9
1994	22.7	22.6	28.7	36.6	42.4	37.8	23.8	24.9	24.6

AVERAGE STUDENT AGE (SPRING)

	UNDERGRADUATE				GRADUATE		ALL STUDENTS		
	DEGREE		NON-DEGREE		DEGREE AND NON-DEGREE				
	Male	Female	Male	Female	Male	Female	Male	Female	TOTAL
1993	23.0	22.7	22.5	31.6	41.7	35.4	23.7	25.3	24.8
1994	22.9	23.0	31.8	27.7	44.1	37.6	24.3	25.1	24.8
1995	23.1	23.0	26.4	27.9	39.1	36.5	23.9	24.8	24.5

BLACK STUDENT ENROLLMENT

FALL	MALE			FEMALE			TOTAL		
	Black Male	Total Male	%	Black Female	Total Female	%	Total Black	Total Students	%
1990	103	914	11.3%	302	1763	17.1%	405	2677	15.1%
1991	97	861	11.3%	309	1845	16.7%	406	2706	15.0%
1992	97	864	11.2%	306	1674	18.3%	403	2538	15.9%
1993	111	912	12.2%	354	1852	19.1%	465	2764	16.8%
1994	118	903	13.1%	397	1876	21.2%	515	2779	18.5%

GEOGRAPHICAL DISTRIBUTION OF STUDENTS BY STATE

LOCATION	1990	1991	1992	1993	1994
Alabama	2	2	1	1	0
Alaska	0	0	0	0	0
Arizona	5	0	2	2	0
Arkansas	0	5	0	0	0
California	3	2	4	5	3
Colorado	1	2	0	0	0
Connecticut	2	4	3	1	2
Delaware	0	2	1	1	1
District of Columbia	2	1	0	0	0
Florida	9	10	14	19	23
Georgia	52	54	52	44	44
Hawaii	0	0	0	1	0
Idaho	0	0	0	0	1
Illinois	2	2	1	1	1
Indiana	0	1	1	2	3
Iowa	0	0	0	0	0
Kansas	0	0	0	0	0
Kentucky	1	1	1	0	2
Louisiana	1	0	0	0	1
Maine	0	0	1	2	1
Maryland	2	2	2	1	4
Massachusetts	0	0	2	0	0
Michigan	0	0	1	2	0
Minnesota	0	1	1	0	3
Mississippi	0	0	1	1	0
Missouri	1	0	0	2	1
Montana	0	0	0	0	1
Nebraska	0	0	0	0	0
Nevada	0	0	0	0	0
New Hampshire	0	0	0	0	0
New Jersey	5	2	3	5	10
New Mexico	2	1	1	0	1
New York	7	7	8	11	9
North Carolina	8	11	5	4	5
North Dakota	0	0	0	0	0
Ohio	5	5	2	3	3
Oklahoma	0	0	0	0	0
Oregon	0	0	0	0	1
Pennsylvania	4	3	1	1	1
Rhode Island	0	0	0	0	0
South Carolina	2513	2544	2388	2612	2607
South Dakota	0	0	0	0	0
Tennessee	0	2	1	1	1
Texas	2	1	1	0	1
Utah	0	0	0	0	0
Vermont	0	0	0	0	0
Virginia	6	5	7	7	8
Washington	1	1	1	1	2
West Virginia	0	0	0	0	0
Wisconsin	0	0	0	0	0
Wyoming	0	0	0	0	0
Foreign	41	35	32	34	39
GRAND TOTAL	2677	2706	2538	2764	2779

GEOGRAPHICAL DISTRIBUTION OF STUDENTS BY SOUTH CAROLINA COUNTY

COUNTY	1990	1991	1992	1993	1994
Abbeville	219	180	204	180	162
Aiken	56	74	35	39	51
Allendale	1	1	2	0	0
Anderson	183	182	177	210	180
Bamberg	6	7	10	12	9
Barnwell	4	3	4	5	7
Beaufort	7	7	9	10	9
Berkley	16	14	17	20	21
Calhoun	2	2	6	4	4
Charleston	29	25	26	35	44
Cherokee	11	17	22	23	20
Chester	14	13	31	15	13
Chesterfield	3	4	6	5	11
Clarendon	1	2	2	4	4
Colleton	7	13	17	14	10
Darlington	8	10	8	9	13
Dillon	2	8	10	8	12
Dorchester	8	7	10	15	20
Edgefield	98	145	44	37	30
Fairfield	6	6	8	5	6
Florence	11	13	6	8	10
Georgetown	4	50	8	11	7
Greenville	138	144	148	200	238
Greenwood	795	750	743	786	726
Hampton	6	8	5	5	7
Horry	16	10	14	20	21
Jasper	2	0	2	2	2
Kershaw	16	19	15	16	24
Lancaster	10	4	5	6	6
Laurens	158	196	184	258	210
Lee	0	0	2	6	5
Lexington	106	94	101	109	111
Marion	0	0	3	4	7
Marlboro	5	5	5	4	7
McCormick	32	44	52	52	68
Newberry	92	94	82	77	92
Oconee	30	32	27	35	33
Orangeburg	16	12	6	6	14
Pickens	48	49	47	56	57
Richland	74	63	54	62	71
Saluda	150	108	76	91	124
Spartanburg	76	67	67	92	80
Sumter	10	24	24	21	23
Union	13	13	11	10	11
Williamsburg	4	7	3	4	4
York	19	18	23	25	23
Total S.C. Students	2513	2544	2388	2612	2607
Out-of-State	123	127	118	118	133
Foreign	41	35	32	34	39
GRAND TOTAL	2677	2706	2538	2764	2779

GEOGRAPHICAL DISTRIBUTION OF STUDENTS BY COUNTRY OF ORIGIN

COUNTRY	1990	1991	1992	1993	1994
Australia	2	2	2	2	0
Bangladesh	1	0	0	0	0
Barbados	0	1	1	1	2
Bermuda	0	0	1	1	0
Bolivia	3	3	2	3	3
Brazil	0	0	1	3	3
Bulgaria	0	0	1	2	2
Cambodia	1	1	0	0	0
Canada	1	1	2	1	3
Chile	0	0	0	1	1
China	0	0	1	0	1
Columbia	1	0	0	0	0
England	3	5	0	0	0
Finland	3	1	2	3	2
France	2	1	0	0	2
Gambia	0	0	1	1	1
Germany	0	2	1	0	0
India	1	1	0	0	0
Jamaica	1	0	0	0	0
Japan	2	1	0	0	0
Mauritius	1	2	2	1	1
Netherlands	0	0	1	1	1
Nicaragua	2	2	0	0	0
Nigeria	2	1	0	0	0
Pakistan	1	0	0	0	0
Peru	0	1	1	1	1
Philippines	1	1	1	1	0
Saudi Arabia	0	0	1	0	0
South Africa	0	0	0	0	2
Sweden	2	3	3	3	2
Trinidad	11	6	5	5	6
Turkey	0	0	0	0	0
United Kingdom	0	0	3	4	5
Yugoslavia	0	0	0	0	0
Zimbabwe	0	0	0	0	1
Total Foreign	41	35	32	34	39
S.C. Students	2513	2544	2388	2612	2607
Out-of-State	123	127	118	118	133
GRAND TOTAL	2677	2706	2538	2764	2779

FALL IN-STATE AND OUT-OF-STATE DISTRIBUTION OF HEADCOUNT ENROLLMENT

YEAR	S.C. RESIDENTS						OUT-OF-STATE RESIDENTS						ALL STUDENTS					
	UG		GRAD		TOTAL		UG		GRAD		TOTAL		UG		GRAD		TOTAL	
	#	%	#	%	#	%	#	%	#	%	#	%	#	%	#	%	#	%
1990	2185	82%	328	12%	2513	94%	159	6%	5	0%	164	6%	2344	88%	333	12%	2677	100%
1991	2100	78%	448	17%	2548	94%	151	6%	7	0%	158	6%	2251	83%	455	17%	2706	100%
1992	2070	82%	318	13%	2388	94%	142	6%	8	0%	150	6%	2212	87%	326	13%	2538	100%
1993	2264	82%	340	12%	2604	94%	155	6%	5	0%	160	6%	2419	88%	345	12%	2764	100%
1994	2310	83%	297	11%	2607	94%	168	6%	4	0%	172	6%	2478	89%	301	11%	2779	100%

SPRING IN-STATE AND OUT-OF-STATE DISTRIBUTION OF HEADCOUNT ENROLLMENT

YEAR	S.C. RESIDENTS						OUT-OF-STATE RESIDENTS						ALL STUDENTS					
	UG		GRAD		TOTAL		UG		GRAD		TOTAL		UG		GRAD		TOTAL	
	#	%	#	%	#	%	#	%	#	%	#	%	#	%	#	%	#	%
1991	2044	83%	280	11%	2324	94%	145	6%	2	0%	147	6%	2189	89%	282	11%	2471	100%
1992	1926	88%	118	5%	2044	94%	138	6%	4	0%	142	6%	2064	94%	122	6%	2186	100%
1993	1994	83%	280	12%	2274	94%	137	6%	3	0%	140	6%	2131	88%	283	12%	2414	100%
1994	2122	84%	263	10%	2385	94%	146	6%	3	0%	149	6%	2268	90%	266	10%	2534	100%
1995	2163	84%	248	10%	2411	94%	164	6%	1	0%	165	6%	2327	90%	249	10%	2576	100%

NUMBER OF DEGREES CONFERRED

DEGREE PROGRAMS	1989-90	1990-91	1991-92	1992-93	1993-94
Division of Behavioral Science					
Psychology	18	14	17	21	19
Sociology	9	23	21	19	22
Gerontology Certificate					1
Division TOTAL	27	37	38	40	42
Division of Biological and Physical Sciences					
Biology	6	9	9	5	10
Chemistry	2	0	4	6	2
Engineering (Chemistry)	0	0	0	0	0
Medical Technology	0	0	1	1	1
Division TOTAL	8	9	14	12	13
School of Business					
Business Administration	95	90	107	92	82
Business Education	2	3	6	2	0
School TOTAL	97	93	113	94	82
School of Education					
Early Childhood Education	9	4	10	13	16
Elementary Education (Bachelors)	58	44	39	39	44
Elementary Education (Masters)	23	19	10	21	33
Home Economics	4	11	7	7	2
Special Education	0	0	0	2	12
School TOTAL	94	78	66	82	107
Division of Fine Arts					
Visual Art	9	13	16	28	11
Music	0	0	0	1	4
Music Education	7	1	3	1	7
Speech and Theatre	1	3	3	5	0
Division TOTAL	17	17	22	35	22
Division of History and Political Science					
History	8	7	11	14	16
Political Science	12	5	11	13	9
Division TOTAL	20	12	22	27	25
Division of Humanities					
English	12	14	14	15	8
French	2	4	0	0	0
Interdisciplinary Studies	14	13	18	26	13
Division TOTAL	28	31	32	41	21
Division of Mathematics and Computer Science					
Computer Science	5	11	11	7	14
Mathematics	2	9	5	3	6
Computer Science/Engineering Dual Degree	3	1	0	0	2
Mathematics/Engineering Dual Degree	0	4	0	2	2
Division TOTAL	10	25	16	12	24
School of Nursing					
Nursing	15	21	21	22	27
School TOTAL	15	21	21	22	27
Division of Physical Education and Exercise Studies					
Exercise Studies	2	1	13	13	10
Health/Physical Education/Recreation	18	7	6	3	0
Physical Education	0	2	7	6	7
Division TOTAL	20	10	26	22	17
GRAND TOTAL	336	333	370	387	380

Note: Count is unduplicated. Students with double majors or two degrees are counted only once.

Figures under each academic year are derived by Integrated Postsecondary Education Data System (IPEDS) requirements (combining graduates from the applicable fall and spring semesters and the summer PRIOR to the beginning of the academic year).

FRESHMEN RETENTION AND ATTRITION DATA

Status for subsequent years	Semester of Entry and Number of Freshmen							
	FALL 1986 (N=470)	FALL 1987 (N=491)	FALL 1988 (N=521)	FALL 1989 (N=471)	FALL 1990 (N=485)	FALL 1991 (N=443)	FALL 1992 (N=416)	FALL 1993 (N=)
Fall 1987								
%Graduated	0.00							
%Re-enrolled	67.87							
%Suspended	4.47							
%Discontinued	27.66							
Fall 1988								
%Graduated	0.00	0.00						
%Re-enrolled	54.89	70.88						
%Suspended	8.30	4.28						
%Discontinued	36.81	24.85						
Fall 1989								
%Graduated	3.40	0.20	0.00					
%Re-enrolled	43.40	54.18	67.56					
%Suspended	9.79	8.15	4.41					
%Discontinued	43.40	37.47	28.02					
Fall 1990								
%Graduated	26.17	2.24	0.00	0.00				
%Re-enrolled	17.66	46.44	55.85	74.95				
%Suspended	10.64	9.78	5.95	2.34				
%Discontinued	45.43	41.55	38.20	22.72				
Fall 1991								
%Graduated	37.87	30.14	1.92	0.00	0.00			
%Re-enrolled	4.47	15.89	46.64	53.08	63.71			
%Suspended	11.06	10.59	7.87	6.58	11.34			
%Discontinued	46.60	43.38	43.57	40.34	24.95			
Fall 1992								
%Graduated	39.79	39.10	25.34	2.12	0.00	0.00		
%Re-enrolled	1.70	5.09	19.77	45.86	50.31	65.46		
%Suspended	11.49	10.79	8.45	7.22	15.67	9.26		
%Discontinued	47.02	41.34	46.45	44.80	34.02	25.28		
Fall 1993								
%Graduated		41.34	38.77	28.24	1.65	0.00	0.00	
%Re-enrolled		2.44	4.80	17.20	42.47	54.85	66.11	
%Suspended		10.79	8.83	7.43	16.08	10.38	3.37	
%Discontinued		45.42	47.60	47.13	39.79	34.76	30.53	
Fall 1994								
%Graduated			41.07	35.88	24.54	3.16	0.00	0.00
%Re-enrolled			2.30	3.30	17.73	47.40	53.61	63.73
%Suspended			8.64	9.89	17.32	10.38	5.29	10.59
%Discontinued			47.98	42.31	40.41	39.05	41.11	25.69

Percentages may not total 100% due to rounding.

Freshmen data is provided in accordance with Public Law 101-542 (Student Right-to-Know and Campus Security Act).

TRANSFER RETENTION AND ATTRITION DATA

Status for subsequent years	Semester of Entry and Number of Transfers							
	FALL 1986 (N=196)	FALL 1987 (N=203)	FALL 1988 (N=159)	FALL 1989 (N=182)	FALL 1990 (N=152)	FALL 1991 (N=179)	FALL 1992 (N=224)	FALL 1993 (N=244)
Fall 1987								
%Graduated	1.02							
%Re-enrolled	71.43							
%Suspended	4.59							
%Discontinued	22.96							
Fall 1988								
%Graduated	15.82	2.46						
%Re-enrolled	42.35	68.47						
%Suspended	8.67	4.93						
%Discontinued	33.16	24.14						
Fall 1989								
%Graduated	33.16	13.79	1.99					
%Re-enrolled	16.84	40.89	55.22					
%Suspended	8.67	7.88	8.96					
%Discontinued	41.33	37.44	33.83					
Fall 1990								
%Graduated	40.31	32.02	13.43	2.75				
%Re-enrolled	10.71	19.70	30.35	65.93				
%Suspended	10.20	8.37	10.95	6.59				
%Discontinued	38.78	39.90	45.27	24.73				
Fall 1991								
%Graduated	43.88	43.35	26.37	14.84	1.67			
%Re-enrolled	5.61	6.90	15.92	41.96	63.33			
%Suspended	10.71	9.36	11.94	7.69	5.56			
%Discontinued	39.80	40.39	45.77	35.71	29.44			
Fall 1992								
%Graduated	44.90	47.03	33.33	31.87	10.00	3.35		
%Re-enrolled	2.55	2.48	7.96	17.58	46.11	60.34		
%Suspended	10.71	9.41	11.94	8.24	8.33	2.79		
%Discontinued	41.84	41.09	46.77	42.31	35.56	33.52		
Fall 1993								
%Graduated		47.03	37.81	42.31	35.00	16.76	2.68	
%Re-enrolled		2.97	4.98	5.49	18.33	41.90	65.63	
%Suspended		9.41	12.44	9.89	10.00	6.70	3.13	
%Discontinued		40.59	44.78	42.31	36.67	34.64	28.57	
Fall 1994								
%Graduated			39.30	44.51	43.89	34.64	12.50	2.46
%Re-enrolled			3.48	3.30	7.22	17.88	45.54	64.34
%Suspended			11.94	9.89	9.44	7.26	7.59	8.61
%Discontinued			45.27	42.31	39.44	40.22	34.38	24.59

Percentages may not total 100% due to rounding.

LANDER UNIVERSITY LIBRARY STATISTICS

DESCRIPTION	1990-91	1991-92	1992-93	1993-94	1994-95
LIBRARY STAFF					
Professional Librarians	4	5	5	5	5
Technical Assistants	6	5	5	5	5
CIRCULATION					
Students	30,328	23,119	20,478	29,798	28,330
Faculty/Staff	2,906	2,359	2,331	3,202	1,958
Other	613	530	506	1,163	2,451
Interlibrary Loans (Sent and Received)	1,745	1,899	1,938	1,531	1,559
Reserve Books	2,576	3,925	5,337	7,423	7,122
Total Circulation	38,168	31,832	30,590	43,117	41,420
Items circulated per FTE Student	17.8	15.2	15.6	19.9	19.1
COLLECTION					
Books	124,607	127,116	130,635	134,322	138,289
Bound Periodicals	8,002	8,125	8,486	8,859	9,114
Microforms	79,146	83,056	87,091	90,049	93,284
ERIC	13,417	14,639	17,314	17,945	18,173
Maps	2	2	16	16	81
CD Rom	3	15	18	22	52
U.S. Government Documents	0	0	0	355	411
South Carolina Government Documents	2,459	2,876	2,876	3,299	3,508
Special Collections	98	98	100	121	146
Audiovisuals	*	1,409	1,436	1,476	1,963
Total Collection	227,734	237,336	247,972	256,464	265,021
Volumes in Collection per FTE Student	106.4	113.6	126.1	118.1	122.0
Periodical Subscriptions	1,067	995	932	842	861
REFERENCE QUESTIONS					
	12,631	12,068	12,147	12,585	11,998
FTE STUDENTS					
	2140	2090	1966	2171	2172

* Audiovisuals were not housed in the Library prior to 1991.

GRADUATE EMPLOYMENT (Bachelor's Degree)

Academic Year of Graduation	Number of Graduates	Survey Response Rate	EMPLOYMENT STATUS				Average Beginning Salary	% Salary Change from Previous Year
			% Employed Full-time	% Employed Part-time	% Attending Graduate School Full-time	% Involuntarily Unemployed		
1989-90	289	45%	80%	5%	9%	6%	\$ 18,782	0.5%
1990-91	324	42%	77%	9%	5%	9%	\$ 20,221	7.7%
1991-92	348	39%	84%	4%	10%	2%	\$ 18,085	-10.6%
1992-93	332	45%	75%	11%	8%	5%	\$ 20,570	13.7%
1993-94	349	43%	85%	6%	7%	2%	\$ 20,948	1.8%

Percentages may not total 100% due to rounding.

GRADUATE EMPLOYMENT (Master's Degree)

Academic Year of Graduation	Number of Graduates	Survey Response Rate	EMPLOYMENT STATUS				Average Beginning Salary	% Salary Change from Previous Year
			% Employed Full-time	% Employed Part-time	% Attending Graduate School Full-time	% Involuntarily Unemployed		
1989-90	20	10%	100%	0%	0%	0%	\$ 25,225	9.7%
1990-91	12	25%	100%	0%	0%	0%	\$ 26,000	3.1%
1991-92	15	27%	75%	25%	0%	0%	\$ 24,167	-7.1%
1992-93	30	40%	83%	8%	0%	8%	\$ 27,591	14.2%
1993-94	66	24%	75%	0%	0%	19%	\$ 27,875	1.0%

Percentages may not total 100% due to rounding.

FALL RESIDENTIAL UNIT OCCUPANCY

RESIDENTIAL UNIT/DORMITORY	1990	1991	1992	1993	1994	FALL 1994 CAPACITY AVAILABLE
Brookside	273	269	276	276	273	280
Chipley Hall	99	101	102	104	100	106
Coleman Hall	108	109	107	115	116	118
Thomason	0	0	68	67	68	68
Lander Apartments	123	95	0	0	0	0
Lide	234	236	240	238	239	240
Williamston	122	121	124	121	119	124
Greenwood High Apartments	0	0	0	144	154	156
TOTAL RESIDENTS	959	931	917	1065	1069	1092
% Occupancy	96%	96%	98%	98%	98%	

SPRING RESIDENTIAL UNIT OCCUPANCY

RESIDENTIAL UNIT/DORMITORY	1991	1992	1993	1994	1995	SPRING 1995 CAPACITY AVAILABLE
Brookside	257	230	248	254	243	280
Chipley Hall	83	90	78	72	77	106
Coleman Hall	99	90	93	92	90	118
Thomason	0	0	67	67	64	68
Lander Apartments	93	76	0	0	0	0
Lide	219	219	215	225	216	240
Williamston	116	99	113	111	108	124
Greenwood High Apartments	0	0	0	141	146	156
TOTAL RESIDENTS	867	804	814	962	944	1092
% Occupancy	88%	82%	87%	88%	86%	

FALL TO SPRING CHANGE	-8%	-14%	-11%	-10%	-12%	
------------------------------	------------	-------------	-------------	-------------	-------------	--

**GEOGRAPHICAL
DISTRIBUTION OF
ALUMNI BY SOUTH
CAROLINA COUNTY**

COUNTY	1993	1994
Abbeville	365	358
Aiken	138	142
Allendale	9	8
Anderson	517	522
Bamberg	22	24
Barnwell	22	22
Beaufort	42	45
Berkley	34	35
Calhoun	15	15
Charleston	148	144
Cherokee	19	21
Chester	18	16
Chesterfield	12	13
Clarendon	15	16
Colleton	27	26
Darlington	46	43
Dillon	16	16
Dorchester	53	52
Edgefield	51	56
Fairfield	18	16
Florence	71	69
Georgetown	24	22
Greenville	703	720
Greenwood	2296	2337
Hampton	22	24
Horry	60	61
Jasper	12	11
Kershaw	27	30
Lancaster	24	26
Laurens	414	417
Lee	10	9
Lexington	240	241
Marion	16	14
Marlboro	10	10
McCormick	87	87
Newberry	160	163
Oconee	98	95
Orangeburg	88	84
Pickens	145	150
Richland	271	282
Saluda	164	166
Spartanburg	246	246
Sumter	62	62
Union	43	43
Williamsburg	16	17
York	52	59
Total S.C. Alumni	6948	7035
Out-of-State	1342	1377
Foreign	18	29
GRAND TOTAL	8308	8441

FTE STUDENT/FACULTY RATIO HISTORY

ACADEMIC YEAR	FALL			SPRING		
	FTE Students	FTE Teaching Faculty	FTE Student/Faculty Ratio	FTE Students	FTE Teaching Faculty	FTE Student/Faculty Ratio
1990-91	2140	129.76	16.5	1973	126.03	15.7
1991-92	2090	127.21	16.4	1792	117.91	15.2
1992-93	1966	118.93	16.5	1858	119.26	15.6
1993-94	2171	128.59	16.9	1999	130.26	15.3
1994-95	2172	134.08	16.2	2017	128.48	15.7

FALL 1994 FTE TEACHING FACULTY BY DISCIPLINE AND RANK

DISCIPLINE	PROF	ASSO PROF	ASST PROF	INST	OTHER*	TOTAL
Communications (incl. Media and Journalism)	0.00	0.25	0.00	0.00	0.50	0.75
Computer Science	0.50	2.00	1.00	0.00	0.00	3.50
Teacher Education (incl. Music and Physical Education)	6.00	7.92	6.83	1.00	7.99	29.74
Remedial Education	0.25	0.25	1.00	0.00	0.50	2.00
Practice Teaching	0.00	0.58	0.67	0.00	1.29	2.54
Foreign Languages	1.00	1.00	1.00	0.00	0.50	3.50
Letters (Composition and Literature)	4.25	5.25	2.50	1.00	0.75	13.75
General Studies	0.00	0.00	0.00	0.00	0.73	0.73
Biological Sciences	2.50	1.00	2.00	1.00	2.20	8.70
Mathematics	1.50	3.75	1.00	1.00	1.50	8.75
Multi-Interdisciplinary Sciences	0.25	0.00	0.00	0.00	0.08	0.33
Philosophy and Religion	1.75	0.00	0.00	0.00	0.00	1.75
Physical Sciences (incl. Chemistry and Physics)	1.75	1.00	1.75	0.00	2.20	6.70
Psychology	1.00	1.50	1.00	0.00	1.07	4.57
Social Sciences (Sociology, History/Political Science)	3.75	2.50	5.00	1.00	1.25	13.50
Visual/Performing Arts (Theatre, Art, Dance)	0.50	3.75	3.00	0.00	1.00	8.25
Medical Technology	0.00	0.00	0.00	0.00	0.10	0.10
Nursing	0.00	0.50	6.00	2.00	3.50	12.00
Business and Management	4.00	2.25	3.50	0.00	3.17	12.92
TOTAL	29.00	33.50	36.25	7.00	28.33	134.08

Disciplines are derived by Integrated Postsecondary Education Data System (IPEDS) requirements.

Nine-month and twelve-month faculty are reported as one FTE.

* This category includes part-time faculty, lecturers, and overloads.

**FALL 1994 FACULTY HEADCOUNT
BY DIVISION/SCHOOL BY TENURE STATUS
AND TERMINAL DEGREE**

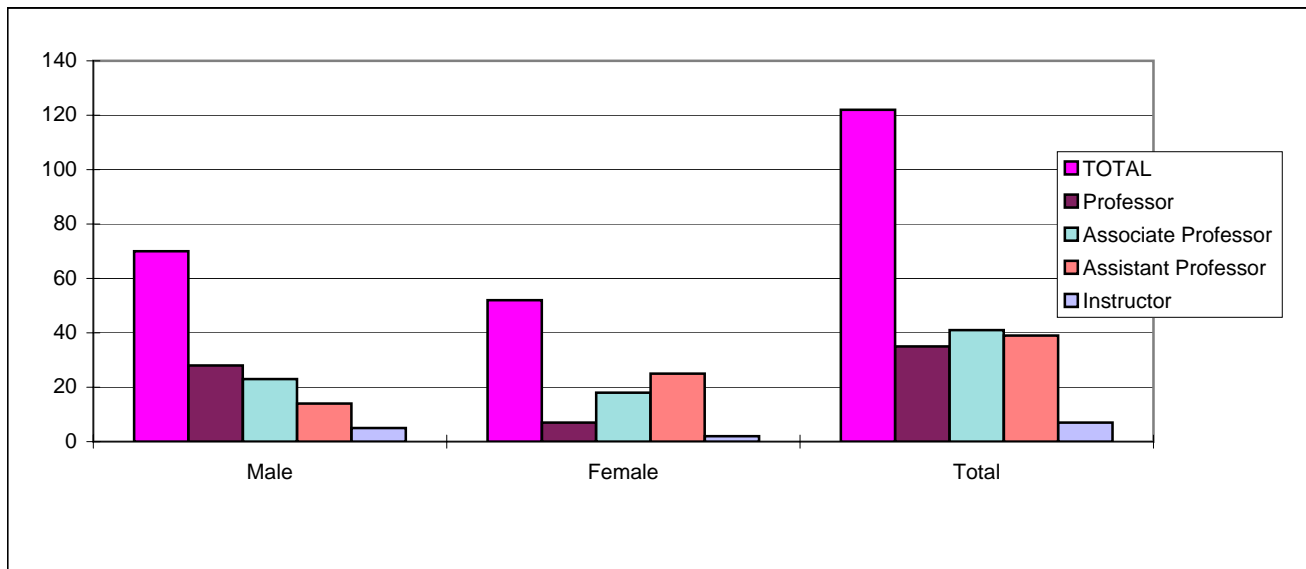
DIVISION/SCHOOL	TOTAL FACULTY	NUMBER WITH TENURE	NUMBER WITH TERMINAL DEGREE
Behavioral Sciences	8	5	8
Biological and Physical Sciences	10	7	9
Business	12	8	12
Education	13	8	11
Fine Arts	14	11	12
History and Political Science	8	7	8
Humanities	19	15	16
Nursing	9	4	2
Physical Education and Exercise Studies	7	5	4
Math and Computer Science	11	9	8
TOTAL	111	79	90

Includes faculty with rank of instructor or higher.
Excludes visiting faculty.

FALL 1994 FACULTY HEADCOUNT BY RANK AND GENDER

Rank	Male	Female	Total
Professor	28	7	35
Associate Professor	23	18	41
Assistant Professor	14	25	39
Instructor	5	2	7
TOTAL	70	52	122

Figures include all faculty (including librarians) with rank of instructor or higher with the exception of the President and Vice-President for Academic Affairs.

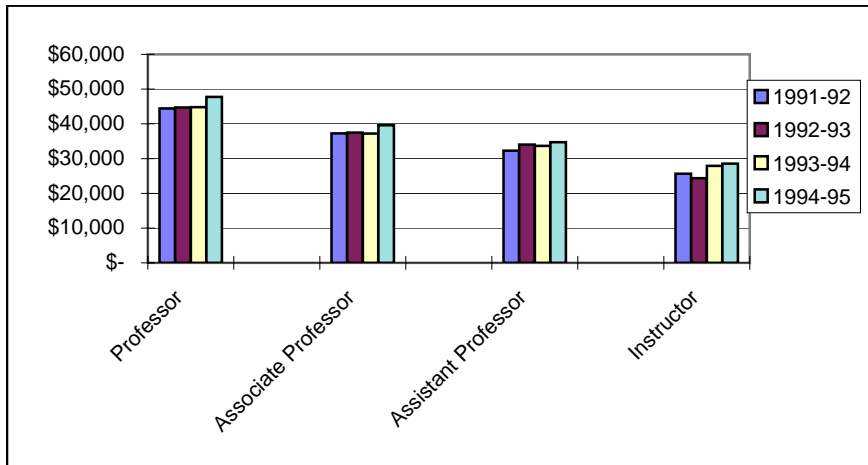


AVERAGE NINE-MONTH FACULTY SALARIES BY RANK

	1991-92	1992-93	1993-94	1994-95
Professor	\$ 44,415	\$ 44,735	\$ 44,815	\$ 47,753
Associate Professor	\$ 37,231	\$ 37,482	\$ 37,204	\$ 39,599
Assistant Professor	\$ 32,299	\$ 34,020	\$ 33,665	\$ 34,706
Instructor	\$ 25,626	\$ 24,352	\$ 27,882	\$ 28,530

Figures include all faculty (including librarians) with rank of instructor or higher with the exception of the President and Vice-President for Academic Affairs.

Twelve-month salaries have been converted to nine-month salary equivalents.



FALL 1994 FTE EMPLOYEES

PROGRAM AREA	FACULTY AND UNCLASSIFIED ADMINISTRATION	CLASSIFIED STAFF	TOTAL
Instruction (Academic Divisions and Instructional Services)	93.75	16.62	110.37
Academic Support			
Media Center/Student Computer Lab	1.00	2.00	3.00
Library	5.00	5.00	10.00
Student Services (also includes Financial Aid, Admissions, Student Records, Athletics)	3.75	22.50	26.25
Institutional Support (Executive Offices, Public Safety, Business Office, Procurement, Printing Services, Human Resources)	5.00	57.00	62.00
Operation and Maintenance of Physical Plant	0.00	52.50	52.50
Auxiliary Services (Health Services, Housing, Bookstore)	0.00	9.20	9.20
TOTAL	108.50	164.82	273.32

Figures exclude temporary employees, student assistants, and part-time faculty.

A twelve-month employee is reported as one FTE. Faculty and staff who work less than twelve months are reported as a pro-rata share of one FTE (i.e., a nine-month employee is reported as 0.75 FTE).

FULL-TIME ACADEMIC FEES

YEAR	IN-STATE	OUT-OF-STATE
1988-89	\$ 1,970	\$ 2,870
1989-90	\$ 2,090	\$ 2,990
1990-91	\$ 2,340	\$ 3,340
1991-92	\$ 2,620	\$ 3,740
1992-93	\$ 2,920	\$ 4,168
1993-94	\$ 3,220	\$ 4,598
1994-95	\$ 3,340	\$ 4,938

Figures do not include fees for Housing or Food Service.

FINANCIAL AID AWARD HISTORY

TYPE OF AID	1990-91		1991-92		1992-93		1993-94		1994-95	
	No.	Amount	No.	Amount	No.	Amount	No.	Amount	No.	Amount
GRANTS										
Federal Pell	630	\$ 929,805	702	\$ 1,086,475	771	\$ 1,177,370	771	\$ 1,117,553	777	\$ 1,152,470
Federal SEOG	66	\$ 42,900	102	\$ 70,688	99	\$ 77,850	80	\$ 65,900	82	\$ 66,550
Other Federal	5	\$ 11,700	8	\$ 26,039	8	\$ 11,198	17	\$ 11,140	9	\$ 6,754
VocRehab	39	\$ 71,334	45	\$ 80,590	36	\$ 75,935	24	\$ 58,263	34	\$ 69,393
State	7	\$ 30,210	9	\$ 39,809	10	\$ 47,700	17	\$ 78,003	16	\$ 50,502
Private	58	\$ 56,493	105	\$ 92,484	62	\$ 81,305	102	\$ 124,996	94	\$ 106,649
Lander Foundation ***	498	\$ 367,105	523	\$ 438,470	493	\$ 448,240	522	\$ 515,283	512	\$ 536,132
TOTAL GRANTS*	1303	\$ 1,509,547	1494	\$ 1,834,555	1479	\$ 1,919,598	1533	\$ 1,971,138	1524	\$ 1,988,450
LOANS										
Federal Perkins	109	\$ 208,687	95	\$ 170,523	76	\$ 172,275	78	\$ 189,950	60	\$ 156,100
Federal Stafford	689	\$ 1,610,923	746	\$ 1,761,722	968	\$ 2,455,696	1217	\$ 3,877,322	1361	\$ 5,258,127
Other	187	\$ 567,913	195	\$ 618,001	231	\$ 785,246	185	\$ 633,599	222	\$ 805,300
TOTAL LOANS*	985	\$ 2,387,523	1036	\$ 2,550,246	1275	\$ 3,413,217	1480	\$ 4,700,871	1643	\$ 6,219,527
EMPLOYMENT										
Federal Work/Study	131	\$ 114,315	143	\$ 125,777	185	\$ 145,219	162	\$ 143,727	139	\$ 136,733
Institutional	375	\$ 277,881	291	\$ 274,866	347	\$ 269,320	399	\$ 297,096	198	\$ 235,460
TOTAL EMPLOYMENT*	506	\$ 392,196	434	\$ 400,643	532	\$ 414,539	561	\$ 440,823	337	\$ 372,193
TUITION/FEE WAIVERS	32	\$ 53,985	28	\$ 60,300	39	\$ 83,861	36	\$ 91,287	31	\$ 80,560
GRAND TOTAL**	1444	\$ 4,343,251	1471	\$ 4,845,744	1559	\$ 5,831,215	1684	\$ 7,204,119	1838	\$ 8,660,730

* Duplicated Headcount

** Unduplicated Headcount

*** Includes Athletic Grants-in-Aid and Academic Scholarships

**STATEMENT OF CURRENT FUNDS REVENUES, EXPENDITURES
AND OTHER CHANGES
YEAR ENDED JUNE 30, 1994**

	UNRESTRICTED	RESTRICTED	TOTAL
REVENUES			
Student Tuition and Fees	\$ 7,934,274	\$ 83,400	\$ 8,017,674
State Appropriations	7,665,470	-	7,665,470
Federal grants/contracts	-	1,310,177	1,310,177
State grants/contracts	-	1,477	1,477
Private gifts/grants/contracts	-	436,746	436,746
Interest Income	7,263	-	7,263
Sales/Service of Auxiliary Enterprises	4,183,197	-	4,183,197
Other Sources	102,451	4,731	107,182
TOTAL CURRENT REVENUES	19,892,655	1,836,531	21,729,186
EXPENDITURES AND MANDATORY TRANSFERS			
Educational and General			
Instruction	7,594,742	33,144	7,627,886
Public Service	39,517	601	40,118
Academic Support	1,088,480	23,832	1,112,312
Student Services	1,652,259	21,058	1,673,317
Institutional Support	2,784,793	28,125	2,812,918
Operation/Maintenance of Plant	2,422,002	7,283	2,429,285
Scholarships/Fellowships	220,910	1,713,552	1,934,462
Educational and General Expenditures	15,802,703	1,827,595	17,630,298
Mandatory Transfers and Loan Fund Matching Grants	6,182	-	6,182
Total Educational and General	15,808,885	1,827,595	17,636,480
Auxiliary Enterprises	5,559,276	8,936	5,568,212
TOTAL EXPENDITURES AND MANDATORY TRANSFERS	21,368,161	1,836,531	23,204,692
TOTAL OTHER TRANSFERS AND ADDITIONS (DEDUCTIONS)	1,417,710	70	1,417,780
NET INCREASE (DECREASE) IN FUND BALANCES	\$ (57,796)	\$ 70	\$ (57,726)

Inventory of Major Buildings

BUILDING NAME/ADDRESS	YEAR OF CONST.	YEAR OF MAJ.REN.	GROSS SQ. FT.	BUILDING USE
RESIDENTIAL UNITS				
Brookside	1977		67,832	Residence Hall
Chipley Hall	1925	1983	20,694	Residence Hall
Coleman Hall	1950		35,572	Residence Hall
Greenwood High Apartments	1925	1984	50,200	Residence Hall
Lide	1984		43,640	Residence Hall
Thomason	1992		13,538	Residence Hall
Williamston	1983		16,464	Residence Hall
ACADEMIC/ADMINISTRATIVE				
Barrett Science Hall	1967		24,445	Science Faculty Offices and Classrooms
Carnell Learning Center	1982		110,898	Administrative/Faculty Offices and Classrooms
Cultural Center	1987		67,947	Fine Arts Faculty Offices and Classrooms
Drummond Athletic Complex	1991		126,291	Athletic Facilities and Physical Education/Exercise Studies Faculty Offices and Classrooms
Genesis Hall	1974		5,400	Nursing Faculty Offices and Labs
Grier Student Center	1978		61,000	Student Affairs Admin. Offices, Bookstore, Post Office and Food Service
Jackson Library	1976		65,255	Library, Student Computer Center, and University Relations Offices
201 Sanders	1955		1,316	Art Studios
203 Sanders	1964		1,069	Art Studios
205 Sanders	1970		1,324	Art Studios
202 Sproles	1955	1992	1,677	ROTC
INSTITUTIONAL SUPPORT				
Physical Plant	1974		6,360	Building and Grounds Maintenance, Custodial Services and Motor Pool
Henrietta Avenue Warehouse	1990		12,000	Storage
Recreation Center	1952		8,246	Student Recreation Facility
President's House	1942	1988	7,000	President's Home
Stranch Guest House	1935	1989	2,000	Guest House
221 Crews	1935		1,800	Physical Plant Administrative Offices
223 Crews	1920		1,500	Computer Repair and Construction Services
303 Willson Street	1934		1,500	Honors International Program
311 Willson Street	1947	1985	1,120	Human Resources
401 Willson Street	1949	1990	1,106	Procurement Services
421 Willson Street	1960	1993	1,378	Public Safety and Health Services

ADMINISTRATIVE