

THESE DRAWINGS AND THE DESIGN THEREON ARE THE PROPERTY OF HEANER DESIGN GROUP AND MAY NOT BE USED IN WHOLE OR PART WITHOUT WRITTEN CONSENT OF HEANER DESIGN GROUP AND ANY INFRINGEMENT WILL BE SUBJECT TO LEGAL ACTION

**BASE BID: AREA #1 AND #2**

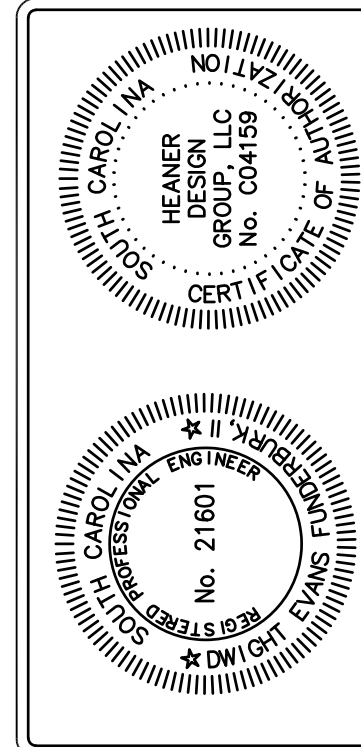
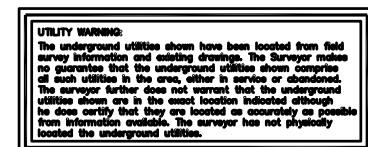
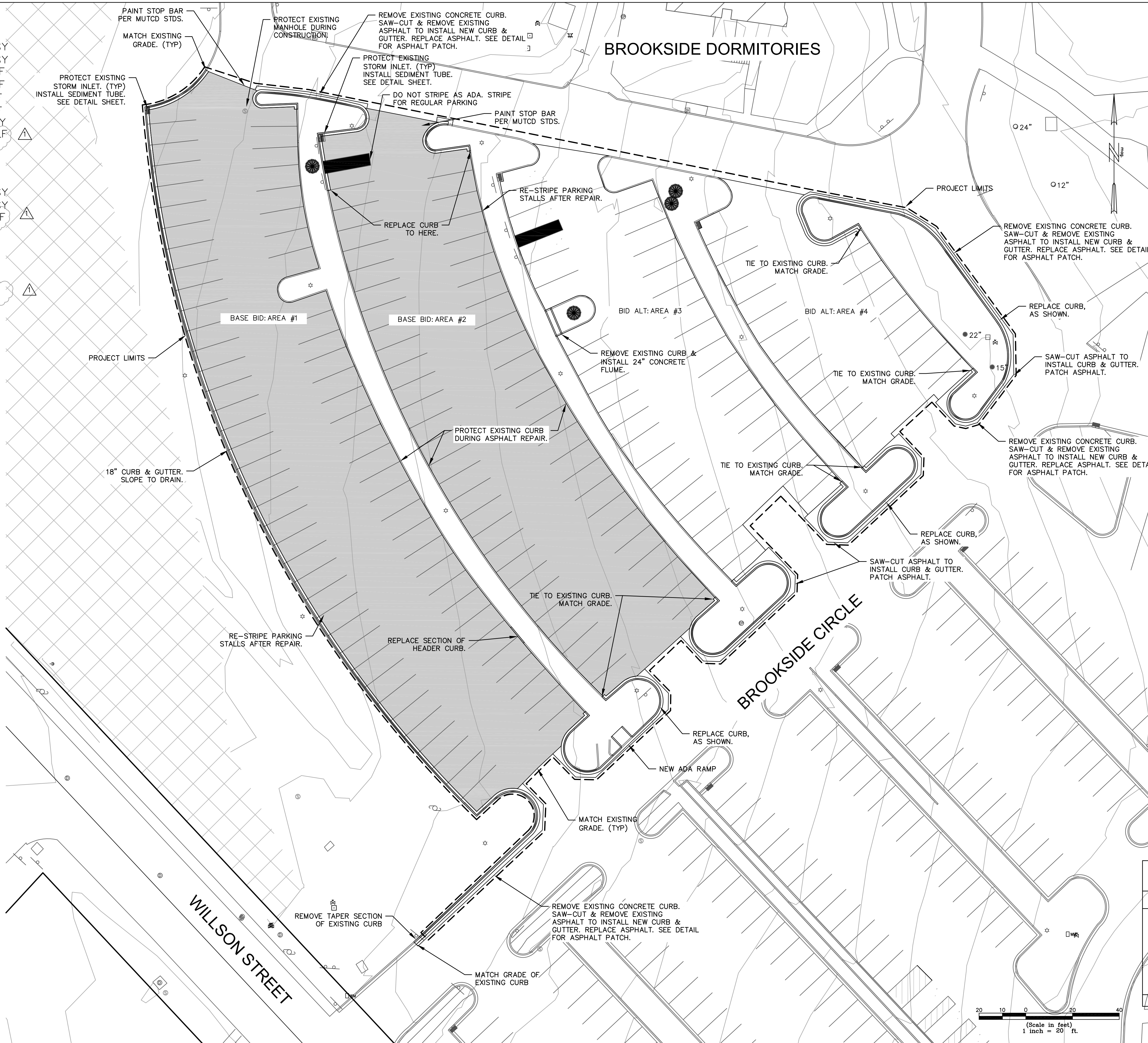
1. MILL & HAUL OFF EXISTING ASPHALT: 4,120 SY
2. 2" TYPE C HOT MIX ASPHALT: 4,120 SY
3. REMOVE HEADER CURB: 1,410 LF
4. 18" CURB & GUTTER: 1,410 LF
5. 6" HEADER CURB: 10 LF
6. 24" CONCRETE FLUME: 12 LF
7. SAW-CUT, REMOVE & PATCH: 200 SY
8. PARKING LOT STRIPING: 2,300 LF

**BID ALTERNATES: AREA #3**

1. MILL & HAUL OFF EXISTING ASPHALT: 1,240 SY
2. 2" TYPE C HOT MIX ASPHALT: 1,240 SY
3. PARKING LOT STRIPING: 645 LF

**BID ALTERNATES: AREA #4**

1. MILL & HAUL OFF EXISTING ASPHALT: 750 SY
2. 2" TYPE C HOT MIX ASPHALT: 750 SY
3. PARKING LOT STRIPING: 380 LF



**HEANER design group**  
 ENGINEERS ARCHITECTS CONSULTANTS  
 115 BEATTIE DRIVE, SUITE 300, GREENWOOD, NC 27639  
 PHONE: 757.835.1100 FAX: 757.835.1101 WWW.HEANERGROUP.COM

<b>CIVIL SITE PLAN</b>	
NO. 1	REVISED QUANTITIES
CHG. DATE	DEFI 4/13/21
DESIGNED BY:	DEFI
CHECKED BY:	DEFI
DRAWN BY:	DPH
JOB NUMBER:	2021-1004
DATE:	03/05/21
APPROVED BY:	DEFI

**C1.0**

**ASPHALT PAVEMENT REPAIR**  
**BROOKSIDE CIRCLE PARKING LOT**  
**FOR**  
**LANDER UNIVERSITY**  
**GREENWOOD, SOUTH CAROLINA**