



Lander
University

Department of Music

Where Musical Minds Meet

Music Manual

2022-2023

TABLE OF CONTENTS

Welcome	Page 1
Full-Time and Adjunct Music Faculty and Staff	Pages 2-3
Facilities and Equipment	Pages 3-4
Jackson Library Music Holdings and Copyright	Page 5
Private Music Instruction and Practice Tips	Page 6
Hearing Health, Vocal Health, Musculoskeletal Injury	Pages 7-8
Recital Performance	Pages 8-9
Music 017 Enrollment and Concert Etiquette	Pages 9-10
Professionalism	Pages 10-11
Ensembles	Page 11
Sophomore/Transfer Evaluation	Page 12
Teacher Certification, K-12	Page 12
Internships	Page 12
Music and Music History Minors	Page 12
Work Study/Music Scholarships/Awards	Pages 13-14
Student Organizations	Page 14
Graduation Approval	Page 14
Accreditation	Page 15
<i>Appendix</i>	
Facilities diagram	A
Musical Instrument Loan Card	B
Applied Music Jury Form	C
Departmental Recital Form	D
Music Scholarship Application and Audition Registration Form	E
Accompanying Form	F
Request for Graduation Form	G

WELCOME!

It is my pleasure to welcome you to the Department of Music at Lander University. We look to you, our new students, for inspiration and renewed musical growth as we share our talents and ideas with one another.

This handbook is intended as a supplement to the Lander University 2022-2023 Catalog and contains policies and procedures which are specific to the Department of Music. We strongly encourage you to read this manual in its entirety and to refer to it often. Should you have any further questions or need clarification about a particular item, please do not hesitate to ask your music faculty advisor. We also invite suggestions for improvement on the content and accuracy of this document.

Distribution of this guide is one way of ensuring that our majors get off to a successful start at Lander University. I hope that you will find the information helpful as you begin your journey, not only toward a college degree, but more importantly toward a career in music.

Best of luck for the upcoming academic year!

Cordially,



Lila Noonkester
Chair, Department of Music
Associate Professor of Music/Voice

FULL-TIME FACULTY AND STAFF

Amy Blackwood, MM, University of North Carolina at Greensboro
Staff Accompanist, String Ensemble
Room A360, Cultural Center, 388-8662, ablackwood@lander.edu

Reed Gallo, DMA, University of Illinois at Urbana-Champaign
Brass, Wind Ensemble, Instrumental Music Education, Conducting
Room A359, Cultural Center, 388-8345, rgallo@lander.edu

Robert Gardiner, DMA, University of South Carolina
Woodwinds, Jazz Ensemble, Instrumental Music Education
Room A355, Cultural Center, 388-8236, rgardiner@lander.edu

Robert Kelley, PhD, Florida State University
Piano, Theory, World Music
Room A364, Cultural Center, 388-8774, rkelly@lander.edu

Chuck Neufeld, DMA, Arizona State University
Voice, Choral Ensembles, Choral Music Education, Conducting
Room A361, Cultural Center, 388-8346, cneufeld@lander.edu

Lila Noonkester, DMA, Eastman School of Music
Chair, Department of Music; Voice, Theory, Opera Workshop
Room A365, Cultural Center, 388-8348, lnoonkes@lander.edu

Colleen White, DMA, University of Oregon
Woodwinds, Music History
Room A362, Cultural Center, 388-8349, cwhite@lander.edu

Mark Rollins
Dean, College of Arts & Humanities
Room A256, Cultural Center, 388-8563, mrollins@lander.edu

Karen Hammond
Administrative Assistant, College of Arts & Humanities
Room A255, Cultural Center, 388-8323, khammond@lander.edu

Courtney Myers
Administrative Assistant, College of Arts & Humanities
Room A257, Cultural Center, 388-8323, cmyers@lander.edu

ADJUNCT FACULTY

Ian Bracchitta, BM, University of Massachusetts
Double bass
Sonja Crenshaw, MM, University of Northern Iowa
French horn, Introduction to Music
Dawn Gallo, MM, Louisiana State University
Flute
Becky Gardner, BME, College of Wooster
Oboe
Catherine Hazan, Catholic University
Violin, Viola
Byron Hilley, MM, Northeast Louisiana
Low brass
Carol Hopkins, MEd, University of Louisville
Introduction to Music
Matthew Jones, BM, University of South Carolina
Percussion, Percussion Ensemble
Michael Newell, BM, Berklee College of Music
Guitar, Guitar Ensemble
Richard Thomas, DMA, University of South Carolina
Cello

FACILITIES

A diagram of the Lander Cultural Center is located in appendix A.

Cultural Center Auditorium, Room A200

A 700-seat performance hall with state-of-the-art acoustics, the auditorium is the principal space for departmental events, including ensemble concerts, honors recitals, collage/holiday concerts, senior recitals, and other genre concerts. The stage is equipped with a Steinway D and a Yamaha CF-III concert grand piano. Use of the auditorium must always be arranged in advance on a reserve basis.

Barksdale Recital Hall, Room A250

A recently renovated 100-seat recital hall equipped with a Yamaha C5 grand piano, Barksdale is the stage for monthly departmental recitals and serves as the primary rehearsal space for University and Old Main Singers. The hall doubles as a classroom for music and art courses.

Classrooms

Room A201, commonly known as the band room, is used by instrumental ensembles and houses a Smart Board used in music education classes.
Room A254 is used for theory and music history classes.
Room A350, commonly known as the music lab, houses digital keyboards and computers used in class piano and theory.
Room A363 is used for class voice and theory.

Practice Rooms

Rooms A311-318 and Room A357 are available for use by music students only. Most rooms contain upright pianos, mirrors, and music stands. There are no assigned or reserved practice rooms. The practice room hallway is secured, and music students may gain access with personal Fine Arts Practice Room Key Cards distributed by Arts & Humanities Administrative Assistant Karen Hammond.

Instrumental Library

Room A358

Faculty Studios

Room A355 applied woodwinds
Room A359 applied brass
Room A360 accompanying
Room A361 applied voice
Room A362 applied clarinet
Room A364 applied piano
Room A365 applied voice

EQUIPMENT

Music Computer Lab

A lab student worker is available to assist music students with composition assignments on Sibelius software and with the use of Auralia software for aural assignments. New lab hours are posted outside A350 each semester.

Instruments

The Department of Music has a limited number of woodwind, brass, string, and percussion instruments for use by Lander students who participate in university ensembles. These instruments are issued by Dr. Gallo, Dr. Gardiner, and Dr. White after an Instrument Loan Card (see appendix B) has been filled out.

Lockers

Locker space for instrument and music storage is available to all music majors and to students currently participating in instrumental ensembles (see Dr. Gallo). A small, refundable deposit is required.

JACKSON LIBRARY MUSIC HOLDINGS

Music scores and literature are located on the second floor of the Jackson Library, while recorded music and videos are available for check-out from behind the front desk. Inform a library assistant of your music major/minor status in order to check out music for the entire semester. Important reference materials, such as the *New Grove Dictionary of Music and Musicians*, can be found on the first floor. Materials on reserve are held behind the front desk. Students are encouraged to search for titles, composers, etc. on-line at www.lander.edu/library and to learn to use Academic Search Complete. Ask the music faculty about a database of streaming documentary films called Films on Demand, and take advantage of online access to NAXOS music library which offers over one million tracks of classical, jazz, world, and folk music.

COPYRIGHT

- It is legal for a teacher to play an entire recording or display an entire score for face to face teaching activities in lessons or classes.
TRUE. Teachers may always share a single copy of a recording or score in classes or lessons.
- It is legal to copy an entire piece of music for lessons if my teacher owns a copy.
FALSE. If you wish to learn and perform a piece of music, then you must purchase your own copy. Copying to avoid the purchase of a musical creation is against the law.
- It is legal to copy a tuba part if the tuba player's dog ate the music the night before the band concert.
TRUE. Emergency copying is legal, as long as a replacement copy is purchased immediately following the performance.
- A person can be fined from \$250 to \$50,000 for violating U.S. Copyright law.
TRUE. The FBI has investigated and convicted violators on college campuses across the nation.
- A person can go to jail for violating copyright law.
TRUE. In addition to fines, violators may be sentenced to prison for up to two years.
- Sheet music found on the internet is not copyrighted, so it is legal to print and copy it.
FALSE. Unless the music is considered "public domain" or public property available for anyone to use for any purpose, it is illegal to print. Always check the copyright status of music that you find on the Internet before you print it.
- Downloading copyrighted recordings for free from peer to peer websites is legal.
FALSE. Downloading an unauthorized copy of any recording is against the law.

PRIVATE MUSIC INSTRUCTION

Music majors are required to complete successfully 7 (teacher certification) or 8 semesters of applied music. Students will be enrolled in applied study by the appropriate applied instructor. Individualized instruction on the primary applied instrument is of utmost importance to a student's musical development, and, thus, there are no absences allowed. These one-on-one lessons carry an applied music fee. Participation in studio classes may be required, in addition to the weekly 60-minute applied lesson. Grades given by the applied instructor are based not only on student work ethic, recital performance, and general progress throughout the term, but also on the quality of a performance jury scheduled during the last week of the semester. A jury form (see appendix C) must be completed by the student and distributed to the appropriate music faculty for written jury comments. A completed accompanying form (see appendix G) and a copy of the intended score must have been submitted to accompanist Amy Blackwood at least two weeks prior to recital and jury performances. Ms. Blackwood will be in contact with upperclassmen to schedule regular rehearsals during the semester. Students may schedule rehearsals with her through the ablackwood.setmore.com website.

PRACTICE TIPS

It is expected that you will be totally prepared for each lesson. Thus, effective practice is critical to your success as a music student. Tips for effective practice include:

- Establish a regular practice schedule at least six days a week for approximately one hour.
- Be sure to use a practice room with access to a piano and a mirror.
- Spend the first 10 minutes warming up your instrument with scales and technical exercises prescribed by your teacher. Do not forget to warm up prior to every applied lesson.
- Spend the remainder of the hour learning repertoire. Your focus may be on pitches and rhythms, on technical or interpretive issues, or on memorization.
- Take short breaks. Stay hydrated.
- Research the historical and stylistic aspects of your assigned repertoire. Listen to recordings.

HEARING HEALTH, VOCAL HEALTH, MUSCULOSKELTAL INJURY

Hearing Health. Hearing health is essential to your lifelong success as a musician. Your hearing can be permanently damaged by loud sounds, including music. Technically, this is called Noise-Induced Hearing Loss (NIHL). Such danger is constant. Noise-induced hearing loss is generally preventable. You must avoid overexposure to loud sounds, especially for long periods of time. The closer you are to the source of a loud sound, the greater the risk of damage to your hearing mechanisms. Sounds over 85 dB (your typical vacuum cleaner) in intensity pose the greatest risk to your hearing. Risk of hearing loss is based on a combination of sound or loudness intensity and duration.

Recommended maximum daily exposure times (NIOSH) to sounds at or above 85 dB are as follows:

- 85 dB (vacuum cleaner, MP3 player at 1/3 volume) – 8 hours
- 90 dB (blender, hair dryer) – 2 hours
- 94 dB (MP3 player at 1/2 volume) – 1 hour
- 100 dB (MP3 player at full volume, lawnmower) – 15 minutes
- 110 dB (rock concert, power tools) – 2 minutes
- 120 dB (jet planes at take-off) – without ear protection, sound damage is almost immediate

Certain behaviors (controlling volume levels in practice and rehearsal, avoiding noisy environments, turning down the volume) reduce your risk of hearing loss. Be mindful of those MP3 earbuds. See chart above. The use of earplugs and earmuffs helps to protect your hearing health. Day-to-day decisions can impact your hearing health, both now and in the future. Since sound exposure occurs in and out of school, you also need to learn more and take care of your own hearing health on a daily, even hourly basis.

It is important to follow basic hearing health guidelines. It is also important to study this issue and learn more. If you are concerned about your personal hearing health, talk with a medical professional. If you are concerned about your hearing health in relationship to your program of study, consult the appropriate contact person at your institution.

For more information, check out the other National Association of Schools of Music (NASM)-Performing Arts Medicine Association (PAMA) hearing health documents, located on the NASM Web site at the URL link http://nasm.arts-accredit.org/index.jsp?page=NASM-PAMA_Hearing_Health

Vocal Health. Vocal health can first be preserved through good general health, such as eating balanced meals, getting adequate rest, and exercising regularly. Warming up the voice properly is crucial to vocal health and longevity. Throat clearing, harsh coughing, and yelling are traumatic to the vocal cords and should be reduced or avoided as much as possible. The vocal folds need hydration in order to vibrate efficiently. Be aware that caffeine and alcohol pull water out of your system and deplete the vocal folds of needed lubrication. Overexposure to the sun may decrease energy levels, while environmental pollutants can affect regular and consistent breathing. Smoking and exposure to smoke irritate the tissues of the throat and degrade lung function. Consult a medical professional about the adverse vocal effects of certain prescription and over-the-counter drugs.

Musculoskeletal Injury. Prevention strategies that may influence the primary risk factors for musculoskeletal injury include: 1) maintaining personal health and well-being; 2) selecting appropriate practice locations; 3) developing good warm-up and practice habits; 4) selecting appropriate instruments, seating, and equipment; 5) carrying and setting up equipment safely; and 6) maintaining body awareness. Early warning signs and symptoms of musculoskeletal injury include: 1) discomfort, pain, tingling, or numbness while playing; 2) weakness in the hands or difficulty with fine control of the fingers; 3) stiffness or limited range of motion; 4) postural changes; and 5) local swelling or redness. If symptoms continue to occur each time you play, continue to get worse, or are unusual for you, consult your instructor and seek medical assistance.

RECITAL PERFORMANCE

Music majors are strongly encouraged to perform on departmental recitals (see sample recital form in appendix D) held 3-4 times a semester in Barksdale Recital Hall. Students must be chosen to audition for the Honors Recital held annually in the spring. Honors Recital auditions take place in the Cultural Center Auditorium before the entire music faculty in December. Students may also be chosen to appear on the Collage Concert, as soloist with the large ensembles, or in solo recital. As of the fall of 2014, all students entering the music program in pursuit of the B. S. in Music, K-12 Teacher Certification degree are required to complete MUSI 389 Performance Project.

Lander University Recital Guidelines

- Student must have attained junior/senior status. Qualified students may be invited by faculty to perform a half recital of 30 minutes or a full recital of 60 minutes.
- One year in advance—student required to submit official proposal of recital program. At this juncture, student and two faculty members from piano, voice, or instrumental areas will deem whether recital possible.

- No later than six months prior to recital---student required to secure staff accompanist by completing accompanying form (see appendix G) and to formulate rehearsal schedule.
- Two months prior to recital---student may be required to appear before screening committee of three faculty members who will complete a jury form in approval or disapproval of continuing recital process.
- No later than six weeks prior to recital---student submits recital program draft, publicity materials, final rehearsal schedule and dress.
- Two weeks prior to recital---student submits final recital program to printer, contacts University Relations and Publications for publicity distribution.
- Performance---faculty committee, including applied instructor, to evaluate recital for grade input.
- To satisfy the MUSI 389 Performance Project requirement, Music, K-12 Teacher Certification candidates must successfully perform a hearing of representative literature during applied juries in the junior year and successfully perform the same repertoire on a public departmental recital the semester prior to student teaching.

MUSIC 017 ENROLLMENT

A supplement to the academic and applied studies of the music major, Music 017 Recitals and Concerts is designed to expose music students to a variety of live experiences by both student and professional performers. Music majors are required to enroll in Music 017 for 7 semesters during the fall and spring. Transfers are required to enroll for each fall and spring semester in attendance at Lander. Music minors are required to enroll for 2 semesters. The 017 faculty coordinator (music faculty serve on a rotating basis) distributes syllabi during the early weeks of the semester. The syllabus contains the designated number of events which a student must attend in order to receive a passing grade and a schedule of events, which may include student recitals, large ensemble and genre concerts, and music conferences. Most concerts are free, and donations are appreciated to help fund music scholarships. In order to receive credit, students must have their Lander IDs scanned before and after an event by a Presidential Ambassador at an upstairs auditorium door. Be aware that late arrivers are not eligible for credit.

CONCERT ETIQUETTE

- I will remember that music is an ephemeral soundscape superimposed on a background of silence, and that its existence is fragile.
- I will not speak while music is being performed publicly, unless to request an ambulance.
- I will not bring cellophane-wrapped candies into a concert hall. If I do, I will not unwrap them while music is being played. If I find myself possessed of a coughing fit, I will find an exit.
- If I arrive after the music has begun, I will stand in the back of the hall until the piece has ended. If I can attain a seat without disturbing any other listener, I will not enter into conversation once I reach it.
- I will not shuffle papers, flip audibly through my program, or squirm. If I am bored, I will leave unobtrusively to spend my time in more amenable pursuits, rather than interfere with the pleasure of others.
- If I possess a wristwatch that beeps, I will leave it at home with my hard candies. If I possess a cell phone, I will not talk on it during the performance but instead will turn it off before I enter the concert hall. If I possess a laptop or an iPad, I will shut it down for fear that its illuminated screen will upstage the performers.
- I will not clap unless I am absolutely certain that a piece is over.
- I will not sprint up the aisle the instant the last piece ends. If I must exit without applauding the soloist, I will wait until he leaves the stage, sparing him the insult of seeing his efforts rewarded with a view of my backside.

PROFESSIONALISM

The 4 Pillars of Professionalism

by Gerald Klickstein

“A musician’s reputation is shaped as much by consistent professionalism (or the lack thereof) as it is by artistry.” (*The Musician’s Way*)

Punctuality

Arrive early. If a rehearsal is scheduled for 7:00 p.m., that’s when the first downbeat occurs. All of the musicians should already be set up and warmed up. *Work efficiently.* Rehearse at a pace that enables you to achieve all of your musical objectives in each session. To that end, plan in advance, avoid irrelevant conversation, and stay on task.

Finish on time. Wrapping up on schedule strongly supports your professional culture. But before your group disperses, set goals for subsequent rehearsals and confirm when and where you'll meet next.

Preparation

Master your part. Pace your individual practice such that you're ready to play or sing your part with ease. *Grasp the whole.* Prior to an initial rehearsal, listen to recordings, study scores, and get to know the entire composition and how your part fits within the whole. *Report underpreparation.* If an illness, accident, or other unforeseen circumstance undermines your rehearsal preparation, report it to your colleagues well ahead of your meeting so that your plans can be amended. *Keep yourself and your gear in shape.* Avoid preventable problems by maintaining a healthy lifestyle, carrying spare parts such as strings, and performing regular maintenance on your instrument.

Courtesy

Employ businesslike manners. Although some of your musical colleagues might also be your friends, adopt professional speech and work habits as you rehearse, and save personal exchanges for breaks. *Be open and positive.* When working in egalitarian groups, try out each other's interpretive ideas and otherwise establish an environment that supports creativity. *Reply promptly to messages.* Collective decision-making depends on timely communication. So, never put off responding to ensemble-related inquiries. And consult all members before you make decisions that affect a group.

Integrity

Be true to your word. Carry out your responsibilities without fail. *Manage money honestly.* If you oversee finances, keep open records and distribute payments promptly. *Help each other succeed.* Build trust and camaraderie by supporting each other in the rehearsal studio, on stage, and beyond.

ENSEMBLES

All students are eligible to enroll in Music 141 University Singers, while an audition is required for Music 142 Old Main Singers (see Dr. Neufeld), Music 143 Chamber Strings (see Ms. Blackwood), Music 145 Jazz Ensemble (see Dr. Gardiner), and Music 149 Wind Ensemble (see Dr. Gallo). Participation in smaller ensembles, including Brass Ensemble (see Dr. Gallo), Guitar Ensemble (see Mr. Newell), Opera Workshop (see Dr. Noonkester), Percussion Ensemble (see Mr. Jones), Piano Ensemble (see Dr. Kelley), String Ensemble (see Ms. Blackwood), Woodwind Ensemble (see Dr. White), and Jazz Combo (see Dr. Gardiner) is encouraged.

SOPHOMORE/TRANSFER EVALUATIONS

The Sophomore & Transfer Music Major Evaluation tool developed and administered by the music faculty is intended to give an overview of a student's progress at the end of four semesters or, in the case of the transfer music major, at the end of two semesters of full-time enrollment at Lander. Students are rated by individual faculty in the areas of applied music, class work, and ensembles. The rating scale indicates student work which exceeds expectations, meets expectations, is below expectations, or shows little or no progress. The evaluation tool is currently being used as a mid-program checkpoint for all students who wish to continue to pursue a music degree at Lander. The mandatory evaluation is scheduled each spring during the week of final exams.

TEACHER CERTIFICATION, K-12

Students interested in becoming certified to teach in grades K-12 must notify their music advisor in order to be assigned a second advisor in the Department of Teacher Education. The student is responsible for arranging sessions with both music and education advisors during pre-registration. Consult with your education advisor about the education curriculum, about taking national education exams, about taking the steps necessary to be officially accepted into Teacher Education, and about Clinical Practice.

INTERNSHIPS

Internships are academic experiences designed to give students practical work exposure in fields closely related to their majors. Music interns work in music businesses or agencies and are supervised by external personnel and designated music faculty. Consult with your music advisor about specific prerequisites and requirements. The chair of the Department of Music reserves the right to approve internship credit hour totals based on the level of a student's cumulative grade point ratio.

MUSIC AND MUSIC HISTORY MINORS

Talented musicians who do not wish to major in music may, subject to an audition, opt for the music minor which consists of 18 credit hours. Students must enroll in 2 semesters of Music 017 Recitals and Concerts (0 hours), 2 semesters of Applied Music (2 hours total), Music 111-112 and Music 113-114 First-Year Theory (8 hours total), Music 201 Introduction to Music History (3 hours total), and 2 semesters of Ensemble (2 hours total). Selection of courses to fulfill the remaining 3 hours in music is left to the discretion of the student and the music advisor. Students interested in a music minor who do not possess a performing background may consider the music history minor, also consisting of 18 credit hours. Students must enroll in Music 101 Introduction to Music or Music 201 Introduction to Music History (3 hours), Music 345 Music of Antiquity, Middle Ages, Renaissance, and Baroque (3 hours), Music 346 Music of the Classic, 19th, 20th, and 21st Centuries (3 hours), Music 333 Music of the World (3 hours), and Music 377 History of Jazz (3 hours), and MUSI 378 History of Rock 'n' Roll (3 hours).

WORK STUDY/MUSIC SCHOLARSHIPS/AWARDS

Work study positions in the Department of Music are filled by students who are eligible for federal aid. Existing positions include two choral assistants (see Dr. Neufeld), two instrumental assistants (see Dr. Gallo or Dr. Gardiner), and one music lab assistant (see Dr. Noonkester). A returnable key deposit is required of work study recipients.

Requests for music scholarships may be made by filing a Music Scholarship Application and Audition Registration Form (see appendix E) with a music faculty member. Most scholarships are renewable based on specific criteria. If invited, scholarship recipients are obligated to meet scholarship donors at the Lander Foundation Scholarship Banquet in the Horne Arena during the fall semester.

Music Scholarships

• Alumni Departmental Scholarship	music
• Opal Rush Anderson Music Scholarship	music
• Arrington-Rhodes	organ emphasis
• Bix Biederbecke Scholarship	instrumentalist
• Eula Caudle Bracknell Scholarship	music
• Carol Brown (rotating)	piano emphasis
• Carillonneur	unrestricted
• Lenna Hall Clifford	piano or violin
• Paul D. Criswell	tenor/baritone/bass, choral music ed
• Fine Arts	music
• John L. and Ruby B. Hare	music
• Fay Hart	choral music and music education
• Thomas L. and Ann Mason Hutto	junior or senior, voice emphasis
• Susan Pope Justesen Music	music education
• Sally Kauffmann Music Education	music education
• Pete G. Kerhoulas Music	entering freshman in music
• Lenti-Wydra Keyboard	keyboard emphasis
• Janie Craig Major	rising junior, piano emphasis
• John G. and Jayne B. McElrath	entering freshman or transfer, music
• Joyce J. Nickles Music Scholarship	freshman piano/voice major, minor
• Clara Bailey Robeson Voice	voice emphasis
• Suzanne Lander Stone	music
• Nat F. White Instrumental Music	Wind or Jazz Ensemble member
• Richard L. Wilkins Instrumental Music	Wind or Jazz Ensemble member
• Young-Beaudrot Music Scholarship	music

Two awards are given annually by the music faculty to deserving music majors. The Music Discipline Award is presented to the most outstanding junior or senior as evidenced by high academic achievement, contributions to the music program, performing artistry, and the ability to act as an excellent role model to peers. Established by Lander alumna Gladys Turner, the Music Medal is presented to a senior who has maintained high scholastic standing and demonstrated the potential for making an outstanding contribution to the field of music education, performance, or music-related work. Awards will be presented at the Academic Ceremony in April, and recipients are obligated to attend.

STUDENT ORGANIZATIONS

Lander's student chapter of the National Association for Music Education holds a membership drive aimed at all music students at the beginning of the fall semester. As a NAFME Collegiate member, you will discover new teaching methods and techniques, be informed of the latest advancements and innovations in music education, expand your network of professional contacts, open doors to job opportunities, enhance credentials on your resume, develop leadership skills, and gain insight into the professional world. The student organization hosts fundraisers such as the Miss Lander University Pageant and attends the South Carolina Music Educators Association conference held in Columbia during February. Dr. Noonkester serves as advisor.

GRADUATION APPROVAL

The graduation approval process requires students to work closely with their music advisor and with the music department chair. The following procedural guidelines must be followed:

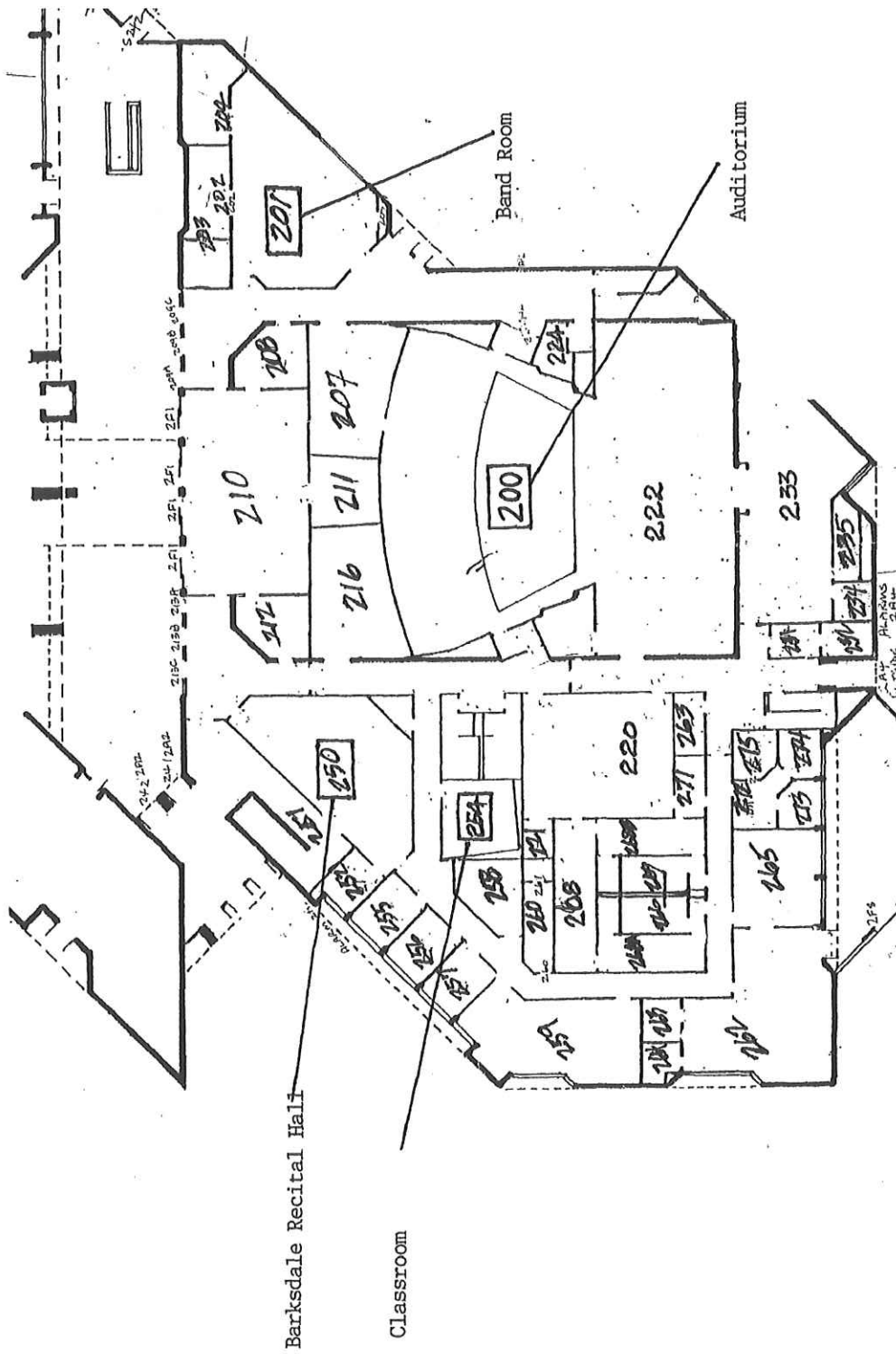
- During the semester prior to graduation, the student must:
 - print out a degree evaluation,
 - review the evaluation with an advisor,
 - submit petitions and course substitutions for signatures, and
 - keep personal copies of submitted and approved petitions and course substitutions.

- During the second week of the semester of graduation (prior to the university deadline for submission of signed materials), the student must submit to the department chair for approval:
 - a completed Request for Graduation form,
 - a current degree evaluation, and
 - copies of approved petitions and course substitutions.
- Prior to submission of signed originals to the Office of the Registrar on or before the university deadline, the student must:
 - photocopy all documents,
 - keep a personal copy of all documents, and
 - file a copy of all documents with the music department chair.

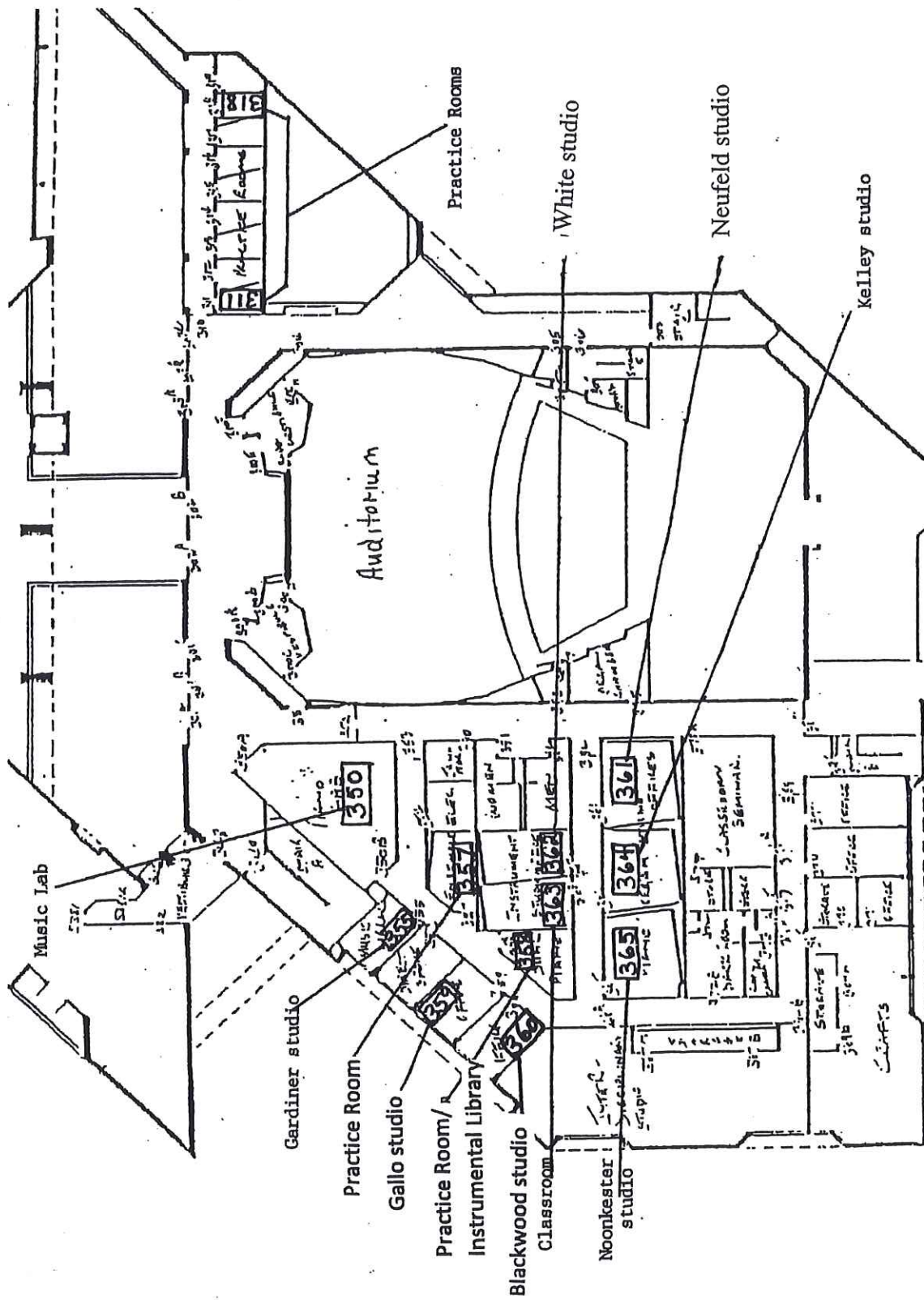
Prospective graduates in the Music, K-12 Teacher Certification degree program will coordinate the approval process with the Department of Teacher Education as well as with the Department of Music.

ACCREDITATION

The Department of Music at Lander University has held accredited institutional membership in the National Association of Schools of Music since 1997. The purpose of NASM is to advance the cause of music in American life and especially in higher education, to establish and maintain minimum standards for the education of musicians, while encouraging both diversity and excellence, and to provide a national forum for the discussion of issues related to these purposes. The department's next evaluation for reaccreditation is scheduled for the 2022-23 academic year.



Appendix A



Appendix A

Musical Instrument Loan Card

Date _____

Name (print) _____

Address _____

Phone (cell) _____ (permanent) _____

Instrument _____ Serial # _____

Accessories _____

Faculty/Staff Member _____

Signature _____

Lander Jury Form

Name _____ Year: 20__ Semester: Fall Spring

Instrument _____ Date and time of Jury: _____

Applied Music Instructor: _____

Major: B.S. in Music Music Education Music Minor Other

School Year: Fr. So. Jr. Sr.

List of solos and etudes worked on this semester:

List scales and techniques worked on this semester:

Jury Comments:

Tone:

Technique:

Musicality:

Other Comments:

Place in Student Recital Form box in faculty workroom A258

DEPARTMENT OF MUSIC
DEPARTMENTAL RECITAL FORM

Complete Title _____
(include key, opus no., etc., when possible)

Composer's Complete Name _____

Arranger _____

Movements, when applicable _____

Performers with instrument or voice type _____

Accompanist, if applicable _____

Total Performance Time _____

Recital Date _____

Special Instructions _____

(where to place on program, etc.)

Completed by

Date Submitted

Do Not Write Below This Line

Appendix D

No. _____

Lander University

Department of Music

Music Scholarship Application and Audition Registration Form

Please type or print legibly.

Date: _____ Social Security or Lander "L" Number: _____

Name: _____ Gender: ☐ Male ☐ Female

Permanent Address: _____

City: _____ Zip: _____

Current Email Address: _____

Current High School or College: _____ Grad Date: _____

Most Recent SAT or ACT Composite Test Score: _____ Date Taken: _____

Have you made application to Lander? _____ Have you been accepted? _____

Check Requested Audition Date:

☐ Saturday, Sept. 26, 2015

☐ Saturday, Feb. 27, 2016

☐ Alternate date to be arranged

☐ Saturday, Nov. 21, 2015

☐ Saturday, Mar. 19, 2016

Audition Area(s): ☐ Voice ☐ Piano ☐ Instrument: _____

I plan to be a(n): ☐ Music Major ☐ Music Minor ☐ Ensemble Participant Only

How long have you studied? _____ Teacher's Name: _____

Which musical selections have you prepared for your audition?

Title: _____ Composer: _____

Title: _____ Composer: _____

Will you need a university accompanist? _____

Below, please list your performing experience, honors and awards, theory or history study, career goals, and any other pertinent information concerning your musical and academic background.

V O I D

Please submit along with this form one letter of recommendation from a music professional to:

Dr. Anthony Lenti
Department of Music
Lander University
320 Stanley Avenue
Greenwood, SC 29649

You may also copy and paste this form
into an email to: tlenti@lander.edu.



Lander
UNIVERSITY

Appendix E

Amy Blackwood
Accompanying Form
Office number - CC 360
ablackwood@lander.edu
(864) 388-8662

**All scores left in the box on my door or in the workroom must be
labeled with the following:**

Your name _____

Primary instructor's name _____

Date of intended performance (If any) _____

Your email address and phone number _____

Movements or parts of works to be performed should be clearly labeled.

***Please contact me to schedule a rehearsal no later than one week before your performance by email or phone. I should also have the score no later than two weeks prior to the performance. If you have not contacted me by a week prior to the scheduled performance, I reserve the right to decide if the performance is a possibility. If the performance does not take place because of lack of communication on the part of the student, this may adversely affect your applied lesson grade.**



REQUEST FOR GRADUATION

Complete and obtain required signatures before submitting to the Registrar's Office.

- Undergraduates/Second Degree students must run and print a copy of their Degree Evaluation from Bearcat Web and submit with this form.
 - ***Degree Evaluation: The Program Evaluation section and each Area must indicate MET (exception: FALS Area). If a Petition is needed to resolve any issues, the Petition must be completed and signatures obtained then attach to this form.***
- Graduate-Level students must submit their Program of Study Worksheet instead.

Have you applied for a previous semester graduation? **NO** What semester? _____

Graduation Semester _____

Student Level: _____ Undergraduate _____ Graduate

Student's Lander ID _____

Student's name _____

Student's phone number _____

Student's Lander email address _____

Comments: _____

APPROVAL SIGNATURES: A signature indicates that a review has been completed with the student and the Degree Evaluation or Program of Study Worksheet indicates completion or enrollment in all required coursework to meet university and department graduation requirements.

Major Advisor Date

Major Department Chair Date

Teacher Certification, K-12 and Secondary: Dean of the College of Education Date

Graduate-Level Students: Graduate Studies Director Date