

## MEASURE OF ACADEMIC PROFICIENCY AND PROGRESS (MAPP) ASSESSMENT OF GENERAL EDUCATION COMPETENCY C

The MAPP test provides three Criterion-referenced scores (proficiency classifications) that measure the level of proficiency obtained on a certain skill set. Each proficiency level below is defined in terms of a set of specific competencies expected of students.

◆ **Critical Thinking:**

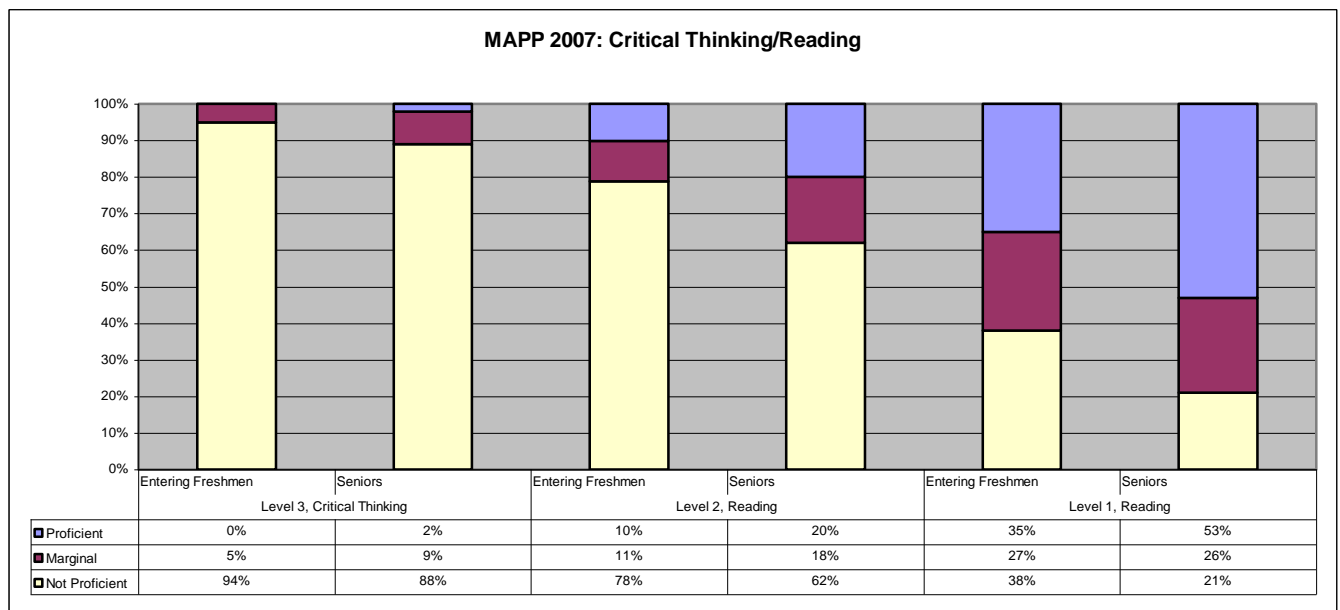
- evaluate competing casual explanations
- evaluate hypotheses for consistency with known facts
- determine the relevance of information for evaluating an argument or conclusion
- determine whether an artistic interpretation is supported by evidence contained in a work
- recognize the salient features or themes in a work of art
- evaluate the appropriateness of procedures for investigating a question of causation
- evaluate data for consistency with known facts, hypotheses or methods.

◆ **Level 2:**

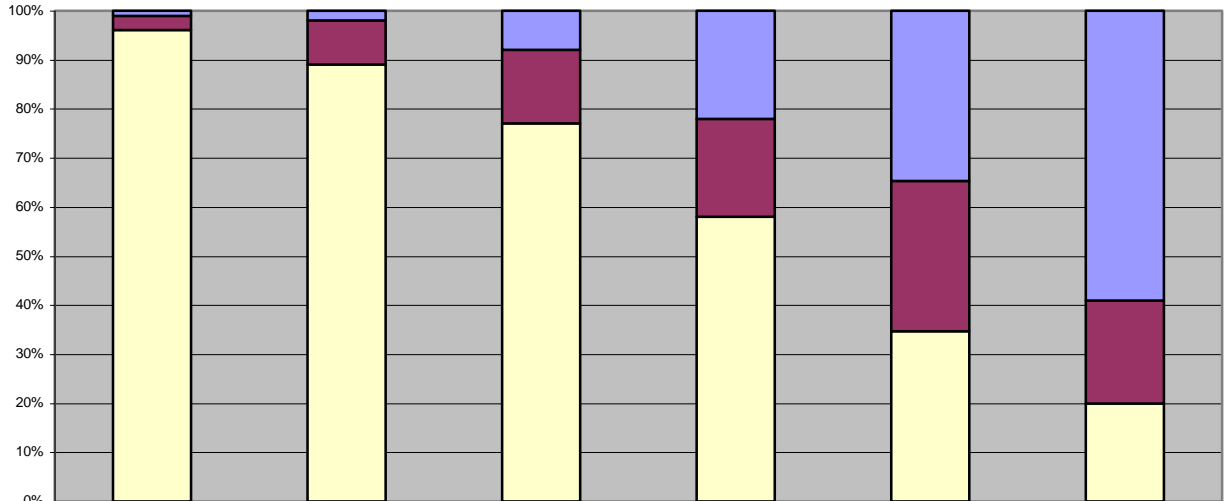
- synthesize material from different sections of a passage
- recognize valid inferences derived from material in the passage
- identify accurate summaries of a passage or of significant sections of the passage
- understand and interpret figurative language
- discern the main idea, purpose, or focus of a passage or a significant portion of the passage

◆ **Level 1**

- recognize factual material explicitly presented in a reading passage
- understand the meaning of particular words or phrases in the context of a reading passage.



**MAPP 2006: Critical Thinking/Reading**



	Level 3, Critical Thinking		Level 2, Reading		Level 1, Reading	
	Entering Freshmen	Seniors	Entering Freshmen	Seniors	Entering Freshmen	Seniors
■ Proficient	1%	2%	8%	22%	35%	59%
■ Marginal	3%	9%	15%	20%	31%	21%
■ Not Proficient	97%	89%	77%	58%	35%	20%