

MEASURE OF ACADEMIC PROFICIENCY AND PROGRESS (MAPP) ASSESSMENT OF GENERAL EDUCATION COMPETENCY A

1. Introduction:

The MAPP test provides three Criterion-referenced scores (proficiency classifications) that measure the level of proficiency obtained on a certain skill set. Each proficiency level below is defined in terms of a set of specific competencies expected of students.

◆ **Level 3:**

- discriminate between appropriate and inappropriate use of parallelism
- discriminate between appropriate and inappropriate use of idiomatic language
- recognize redundancy
- discriminate between correct and incorrect constructions
- recognize the most effective revision of a sentence

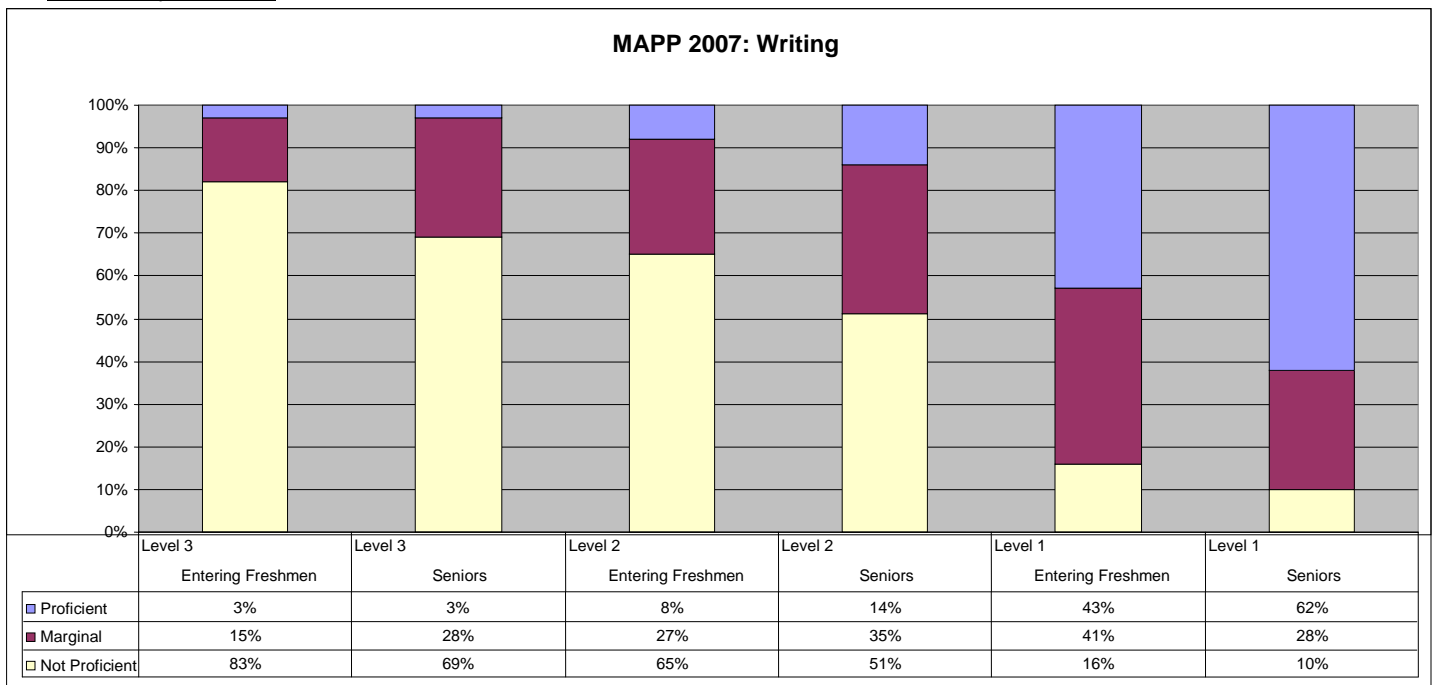
◆ **Level 2:**

- incorporate new material into a passage
- recognize agreement among basic grammatical elements (e.g., nouns, verbs, pronouns, and conjunctions) when these elements are complicated by intervening words or phrases
- combines simple clauses into single, more complex combinations
- recast existing sentences into new syntactic combinations.

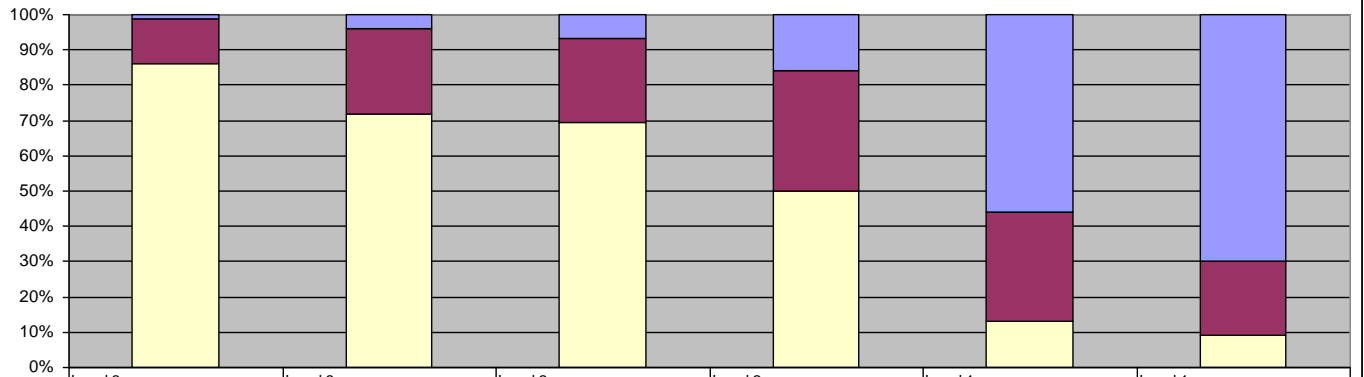
◆ **Level 1**

- recognize agreement among basic grammatical elements (e.g., nouns, verbs, pronouns and conjunctions)
- recognize appropriate transition words
- recognize incorrect word choice
- order sentences in a paragraph
- order elements in an outline

2. Summary of Data:



MAPP 2006: Writing



	Level 3 Entering Freshmen	Level 3 Seniors	Level 2 Entering Freshmen	Level 2 Seniors	Level 1 Entering Freshmen	Level 1 Seniors
Proficient	1%	4%	7%	16%	56%	70%
Marginal	13%	24%	24%	34%	31%	21%
Not Proficient	86%	72%	70%	50%	13%	9%